

Renovation
**FISHER HALL
 BRIDGE &
 LOBBY
 RENOVATION**

DUQUESNE UNIVERSITY

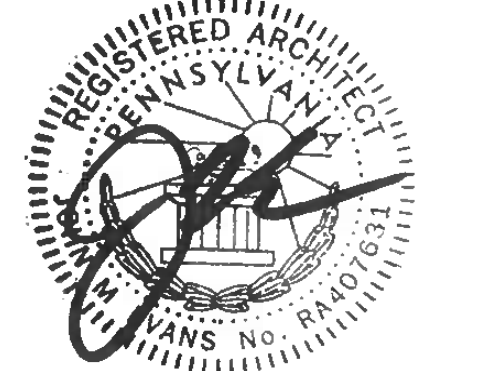
600 Forbes Avenue
 Pittsburgh PA 15282

CONSULTANT

PERMIT SET



These drawings are instruments of the Architect's service and are the property of LGA Partners. They shall not be reproduced or used in any way, whatsoever, without the written permission of LGA Partners. © 2021

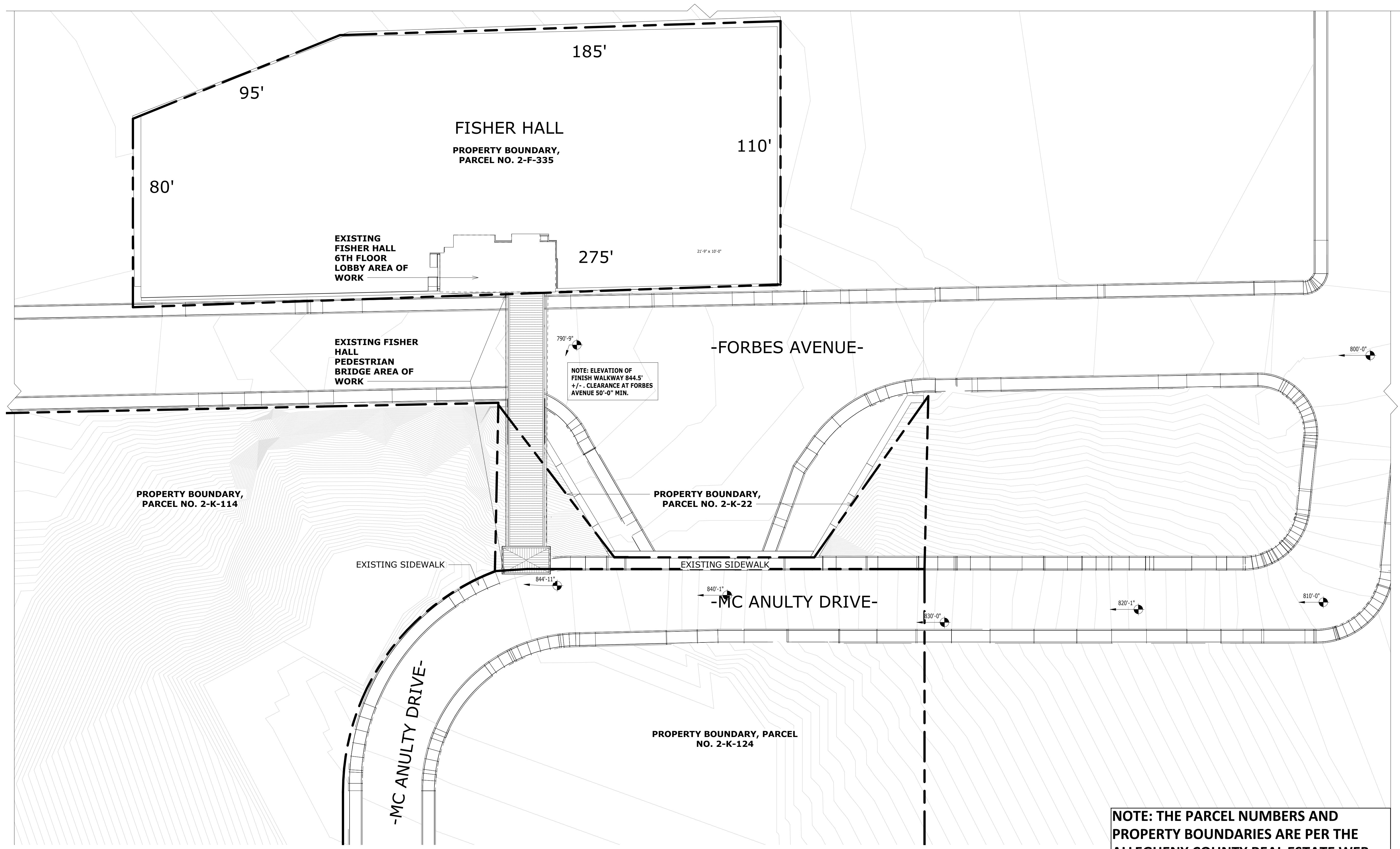


NO.	DATE	DESCRIPTION
2023-1211		Zoning: Site Plan Review Response
		REVISION DATES
		10/23/23
		ORIGINAL ISSUE DATE

PROJECT NO.: 22368
 DRAWN BY:

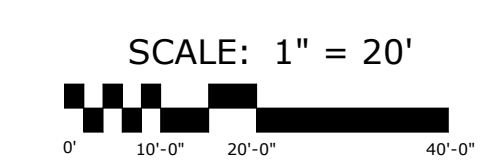
SITE PLAN

AS101



**NOTE: THE PARCEL NUMBERS AND
 PROPERTY BOUNDARIES ARE PER THE
 ALLEGHENY COUNTY REAL ESTATE WEB
 SITE.**

1 ARCHITECTURAL SITE PLAN
 AS101 SCALE: 1" = 20'-0"



EXAMINING LOCATION: C:\Users\mccolm\Documents\Revit\Project\22368\Fisher_Hall_Bridge_Renovating_Lobby_Update\R22_SitePlan.dwg
 PLOT DATE & TIME: 10/23/23 6:16:37 PM
 PLOT BY: J.M.

Renovation
**FISHER HALL
 BRIDGE &
 LOBBY
 RENOVATION**

DUQUESNE UNIVERSITY
 600 Forbes Avenue
 Pittsburgh PA 15282
 CONSULTANT

ELEVATION NOTES

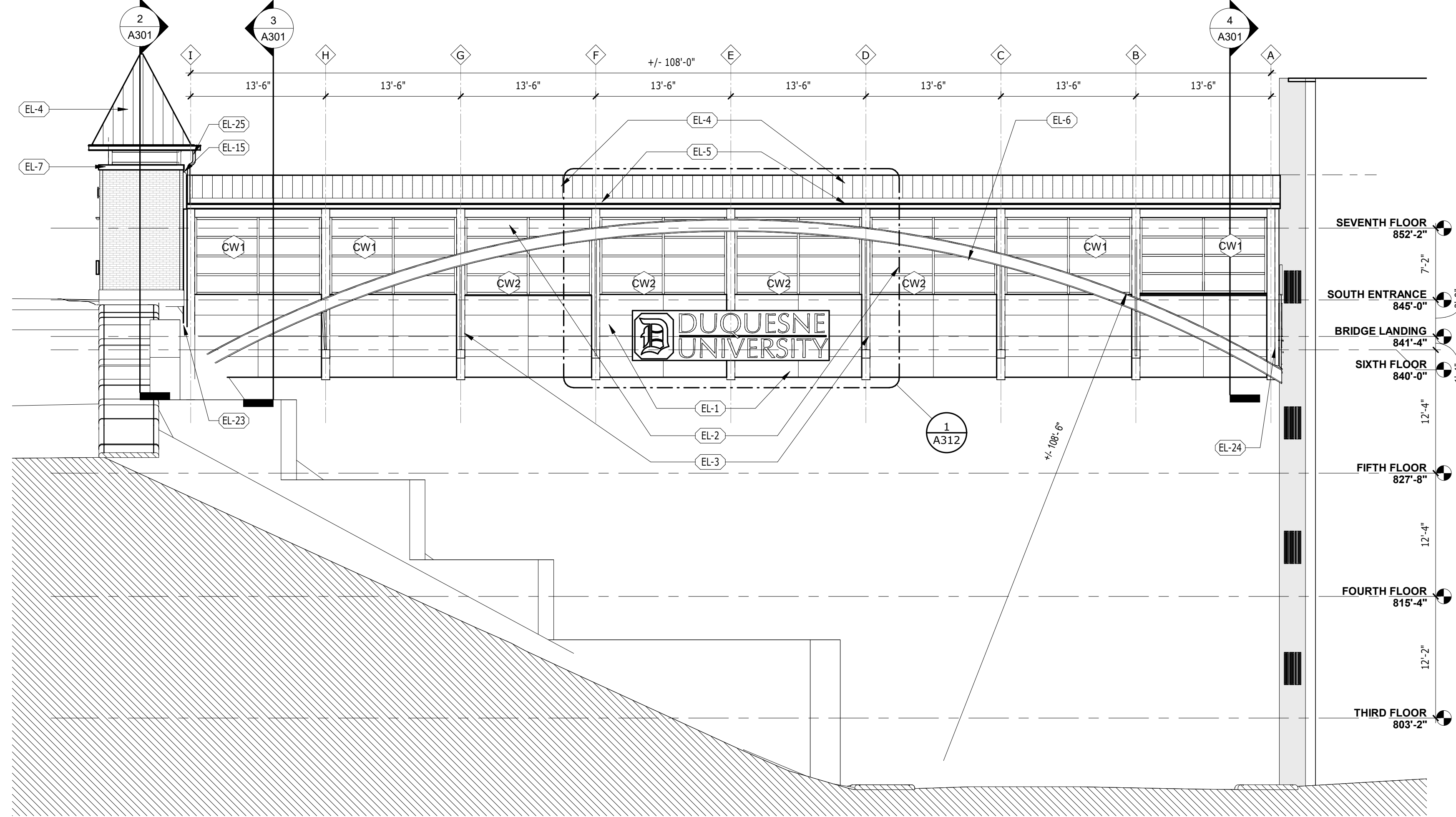
- TEMPERED GLAZING SHALL CONFORM TO CPSC 16 CFR 201 AS REQUIRED IN SECTION 2406 OF THE IBC.
- SAFETY GLAZING SHALL CARRY A FIRE RATING AS RECOGNIZED BY THE IBC AND CONFORM TO THE REQUIREMENTS OF TEMPERED GLAZING.

ELEVATION LEGEND

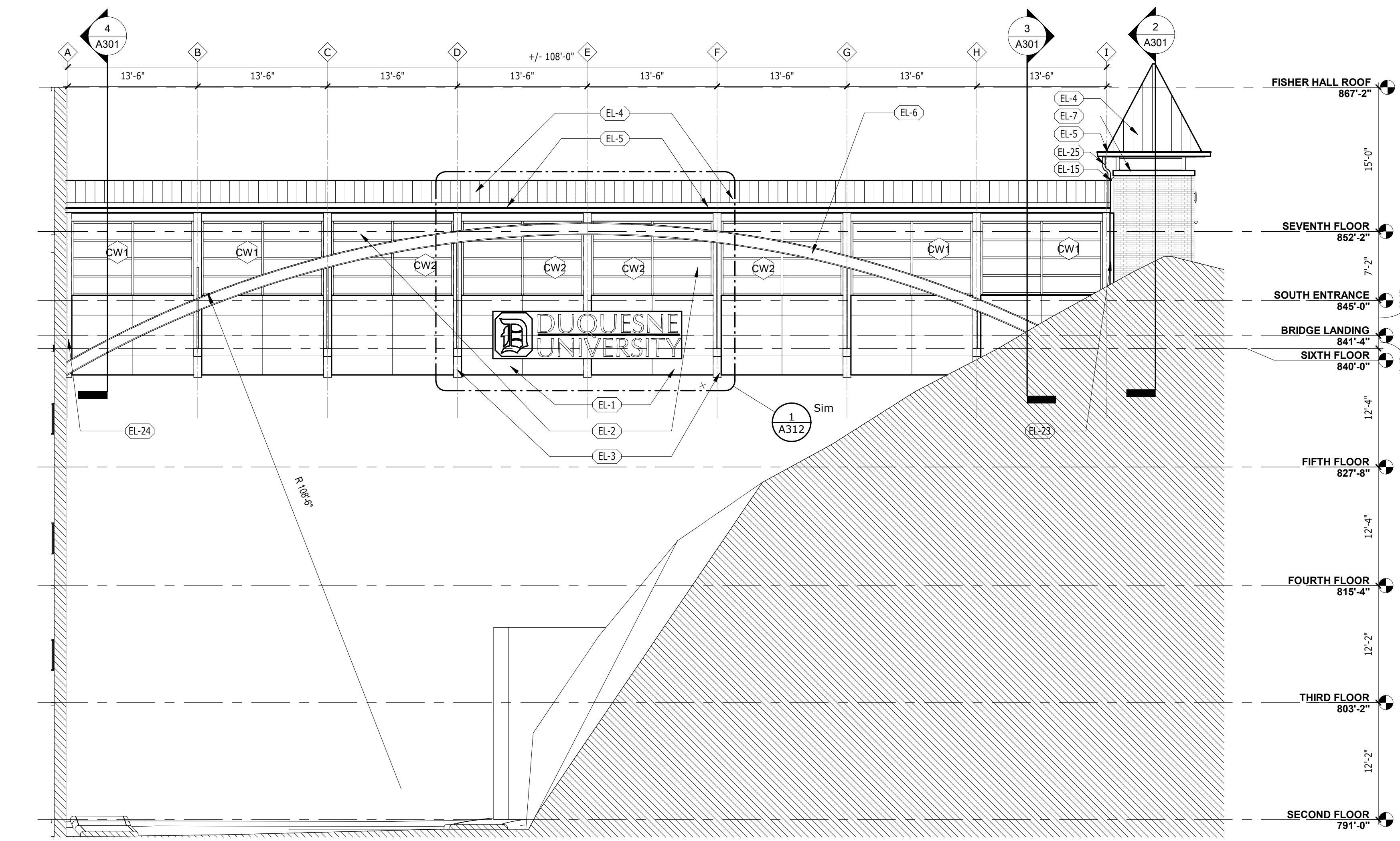
- WINDOW WALL TAG**
- SH# STOREFRONT
 - CH# CURTAINWALL
 - W# WINDOW TAG
 - 101 DOOR TAG
- Name Elevation**
- LEVEL TAG
 - HEIGHT RELATIVE TO FIRST FL.

KEYNOTES - ELEVATION - SECTIONS

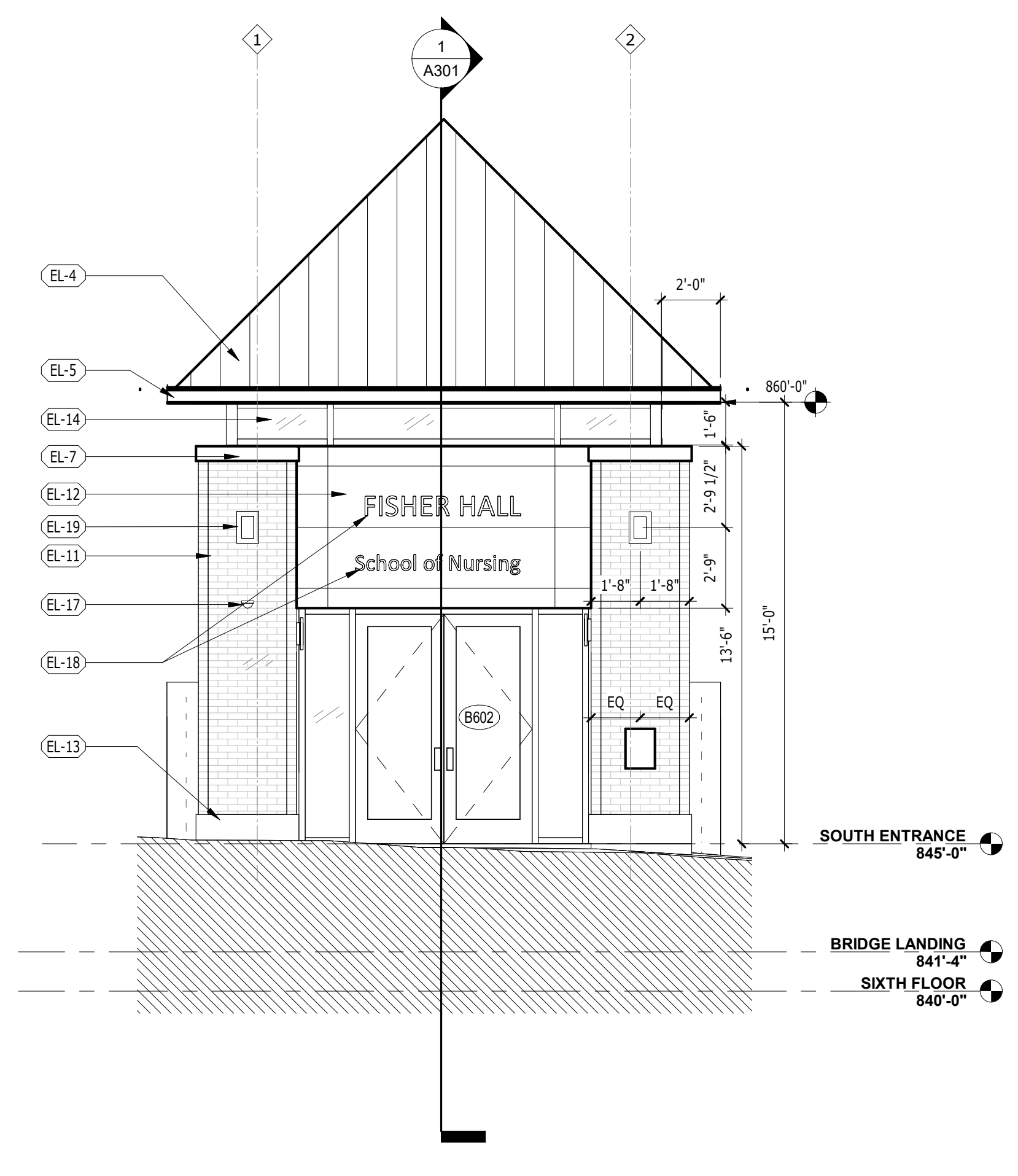
EL-1	MTL. PANEL SYSTEM
EL-2	CURTAINWALL SYSTEM W/ OPERABLE WINDOW, TYP.
EL-3	EXIST. TUBE COL. TO REMAIN. PREPARE SURFACE FOR PAINT. SEE PLUMB. DWGS FOR DOWNSPOUT LOCATIONS.
EL-4	STANDING SEAM MTL. ROOF SYSTEM. SEE STRUCT. DWGS.
EL-5	MTL. GUTTER SYSTEM. SEE PLUMB. DWGS.
EL-6	ARCH STEEL BEAM, PAINTED. COLOR BY ARCHITECT. SEE STRUCT. DWGS.
EL-7	LIMESTONE BRICK PIER CAP
EL-8	EXIST. UTILITIES BELOW BRIDGE FLOOR TO REMAIN INTACT & OPERATIONAL DURING CONSTRUCTION
EL-9	EXIST. STEEL STRUCTURE TO REMAIN. PREP/PAINT EXIST. EXPOSED STEEL, TYP.
EL-10	EXIST. METAL SOFFIT SYSTEM BELOW UTILITIES TO REMAIN
EL-11	EXIST. MASONRY PIERS TO BE CLEANED, PATCHED AS REQUIRED
EL-12	MTL. PANEL SYSTEM OVER EXIST. LINTEL
EL-13	EXIST. CONC. CURB, CLEANED & RESEALED.
EL-14	CLERESTORY GLAZING SYSTEM.
EL-15	EXPANSION JOINT COVER.
EL-16	LIGHT FIXTURE @ EXIST. LOCATION, TYP. SEE ELEC. DWGS.
EL-17	SECURITY CAMERA LOCATION. COORDINATE W/ OWNER & OWNER'S SECURITY VENDOR. SEE ELEC. DWGS.
EL-18	EXTERIOR SIGNAGE. COORDINATE WITH OWNER'S FINAL APPROVED TEXT, SIZE, FINISH & SPACING & PROVIDE REQUIRED BLOCKING.
EL-19	LIGHT FIXTURES. SEE ELEC. DWGS. COORD. WITH EXIST. LOCATION & PATCH/REPAIR BRICK AS REQUIRED.
EL-20	STEPPED METAL REGLET FLASHING CAULKED INTO EXISTING MASONRY, TYP.
EL-21	LIGHT FIXTURE. SEE ELEC. DWGS. CENTER/ALIGN ABOVE LIGHT FIXTURE BELOW. COORD. WITH STRUCT. SLAB ON TOP OF EXIST. MASONRY BLOCK.
EL-22	EXIST. BRICK/ BLOCK & LINTEL TO REMAIN.
EL-23	CONTINUOUS ALUMINUM CLOSURE @ MASONRY PIER/ TUBE COLUMN INTERSECTION.
EL-24	ALUMINUM CLOSURE ANGLES TO REMAIN. PREP FOR MTL. PAINT FINISH. COLOR BY ARCHITECT
EL-25	ALUMINUM DOWNSPOUT. COLOR BY ARCHITECT



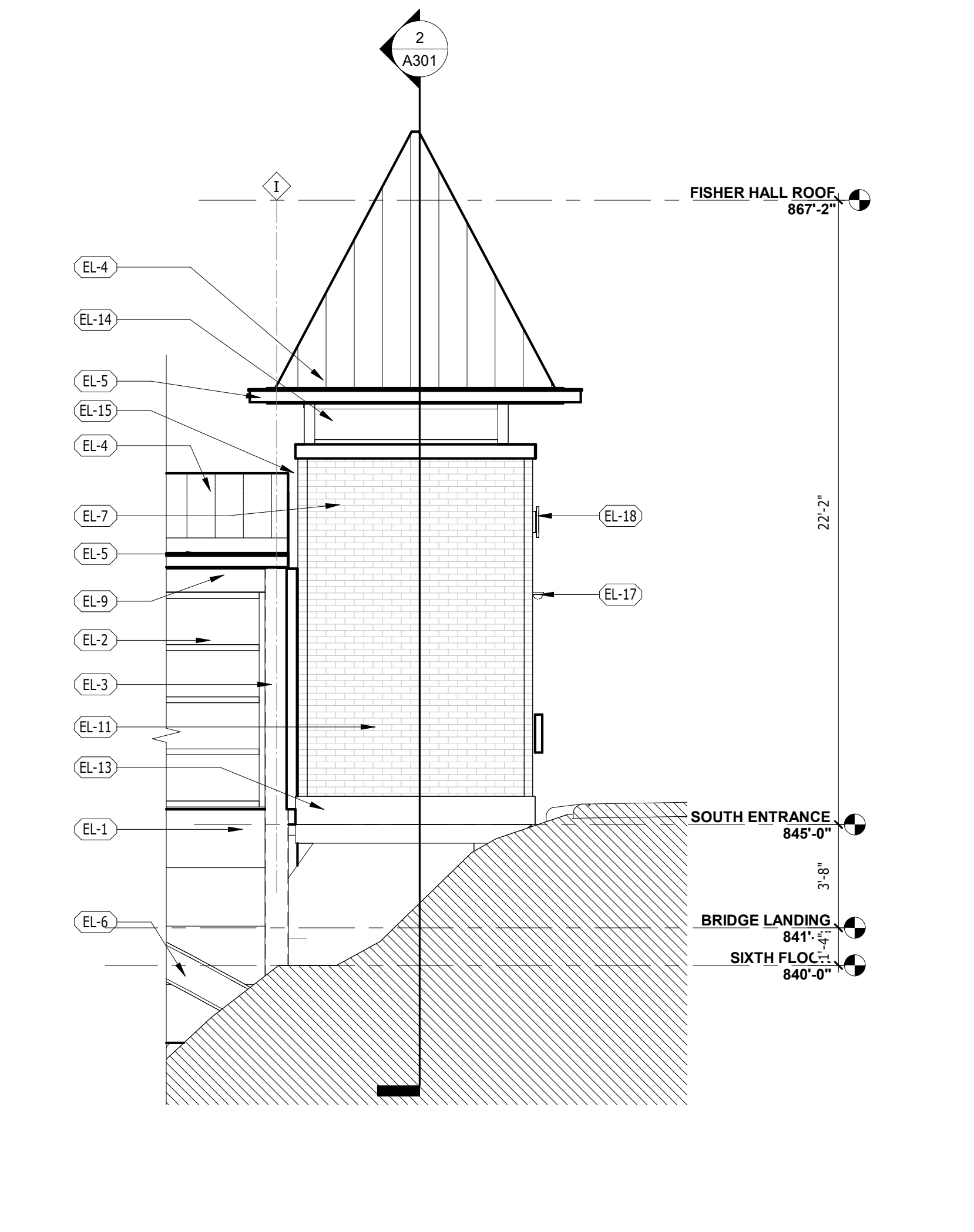
2 EAST ELEVATION
 A201 SCALE: 1/8" = 1'-0"



1 WEST ELEVATION
 A201 SCALE: 1/8" = 1'-0"



3 SOUTH ENTRANCE, VIEW NORTH
 A201 SCALE: 1/4" = 1'-0"

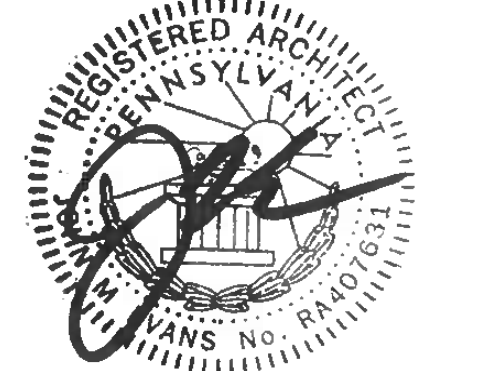


4 SOUTH ENTRANCE, VIEW WEST
 A201 SCALE: 1/4" = 1'-0"

PERMIT SET



These drawings are instruments of the Architect's service and are the property of LGA Partners. They shall not be reproduced or used in any way, whatsoever, without the written permission of LGA Partners. © 2021



NO.	DATE	DESCRIPTION
2023-1211	10/23/23	Zoning: Site Plan Review Response
REVISION DATES		
ORIGINAL ISSUE DATE		

PROJECT NO.: 22368
 DRAWN BY:

ELEVATIONS

A201

DRAWING LOCATION: C:\Users\mccormac\Documents\Revit\Projects\22368 Fisher Hall Bridge Lobby Reading & Lobby Update R22_SMA\A201.dwg
 PLOT DATE & TIME: 10/23/2023 7:58:27 PM

Renovation
**FISHER HALL
 BRIDGE &
 LOBBY
 RENOVATION**

DUQUESNE UNIVERSITY

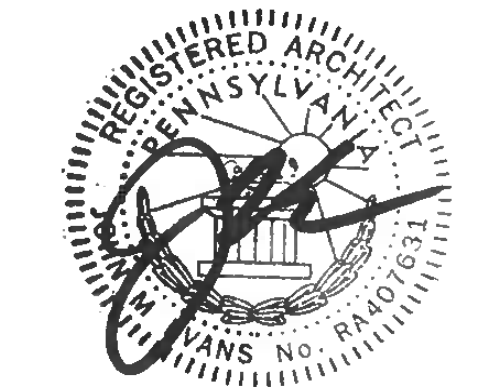
600 Forbes Avenue
 Pittsburgh PA 15282

CONSULTANT

PERMIT SET

lga PARTNERS
 1425 Forbes Ave. Suite 400 Pittsburgh, PA 15219
 P 412.243.3430 F 412.224.4747

These drawings are instruments of the Architect's service and are the property of LGA Partners. They shall not be reproduced or used in any way, whatsoever, without the written permission of LGA Partners. © 2021

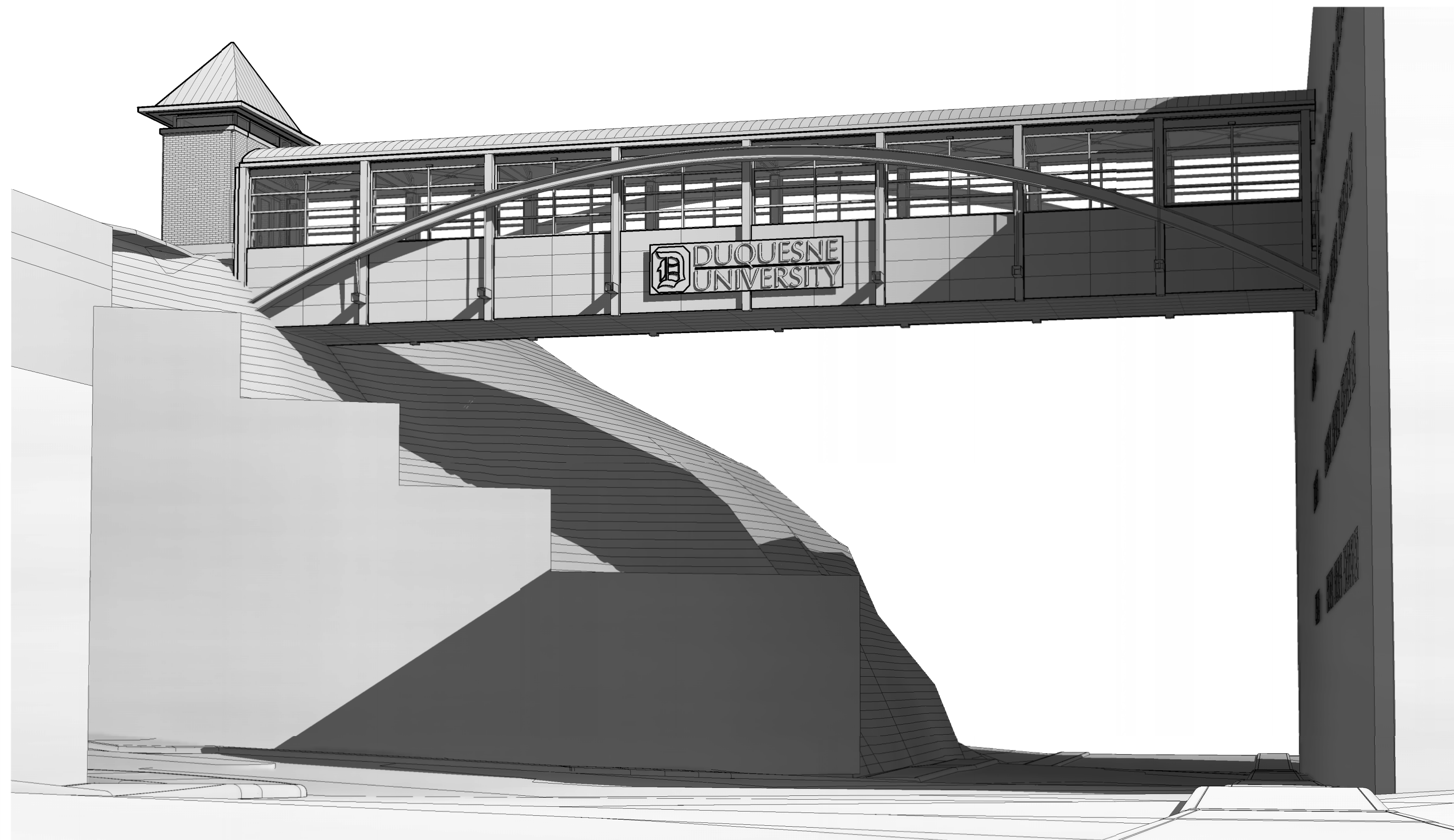


NO.	DATE	DESCRIPTION
		REVISION DATES
		10/23/23
		ORIGINAL ISSUE DATE

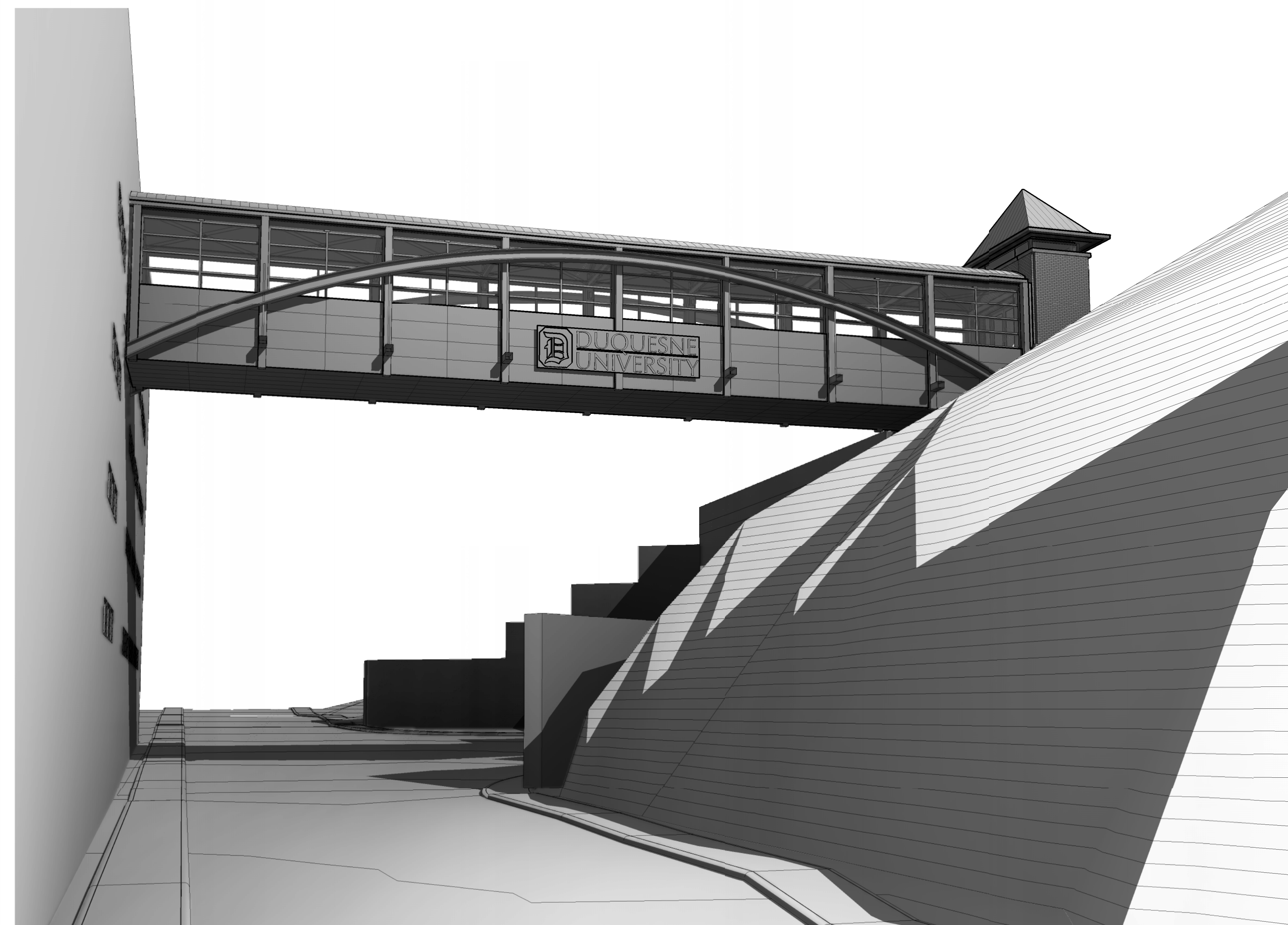
PROJECT NO.: 22368
 DRAWN BY:

EXTERIOR
 PERSPECTIVES -
 BRIDGE, FOR
 REFERENCE ONLY

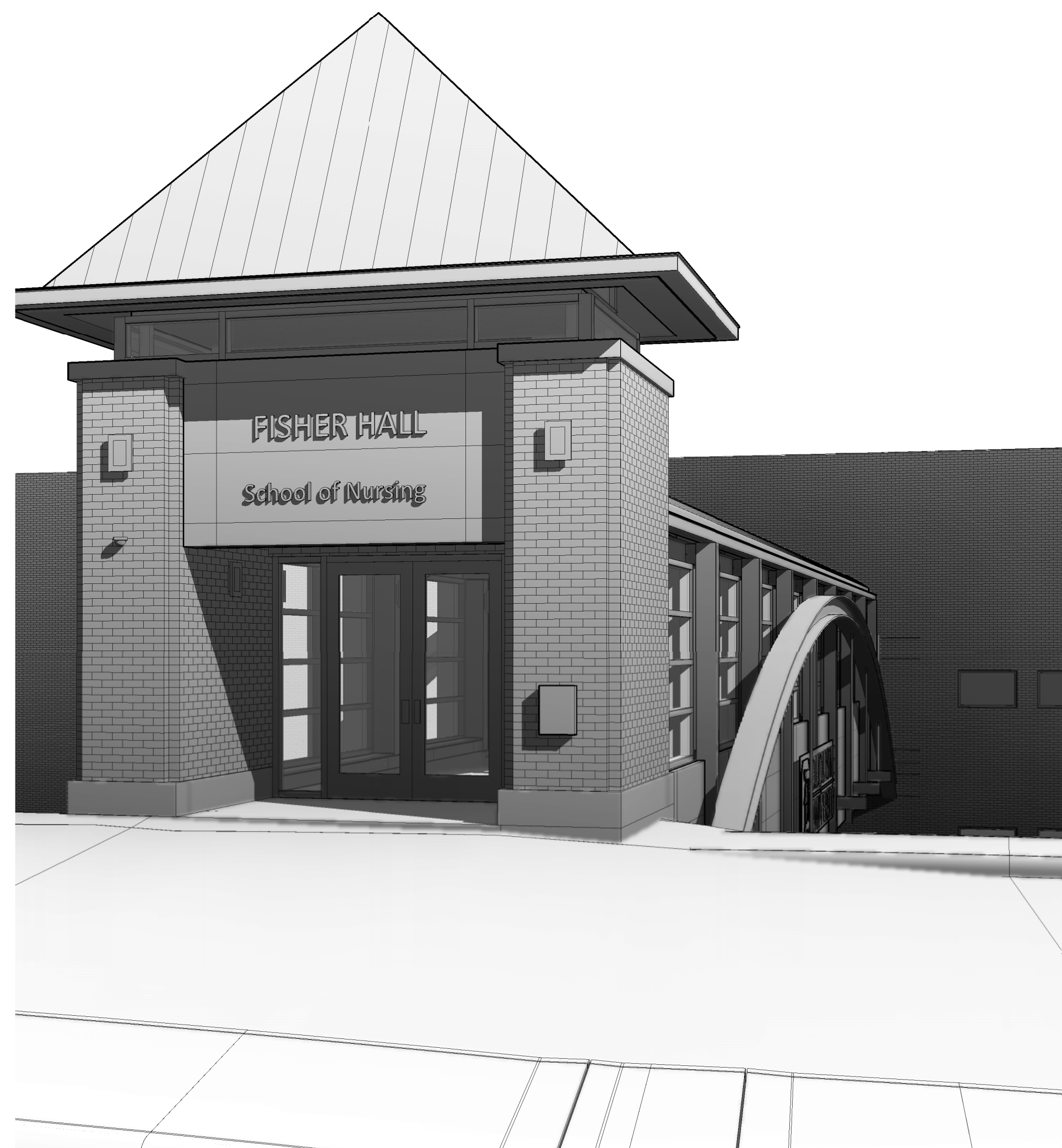
A203



2 **FORBES AVENUE VIEW TOWARDS TOWN**
 A203 SCALE:



3 **FORBES AVENUE VIEW TOWARDS UPTOWN**
 A203 SCALE:



1 **SOUTH ENTRANCE @ McANULTY ROAD**
 A203 SCALE: