

Wylie Bistro



2144 Wylie Avenue



Hill District, Pittsburgh PA

COMMUNITY

COLLABORATION

COMMERCE

CULTURE



HILL CDC

April 17, 2018
DRP Presentation

GREATER HILL DISTRICT Master Plan





CENTRE AVENUE CORRIDOR REDEVELOPMENT AND DESIGN PLAN

JUNE 2015

prepared for
The Hill Community Development Corporation
powered by
evolveEA and **4ward Planning**



Centre of Opportunity

GREENSPACE WALK

SMALL GREENSPACES ALONG KIRKPATRICK THAT ACT AS A STEPPING STONE FROM BEDFORD AVE TO THE BOTTOM OF KIRKPATRICK.

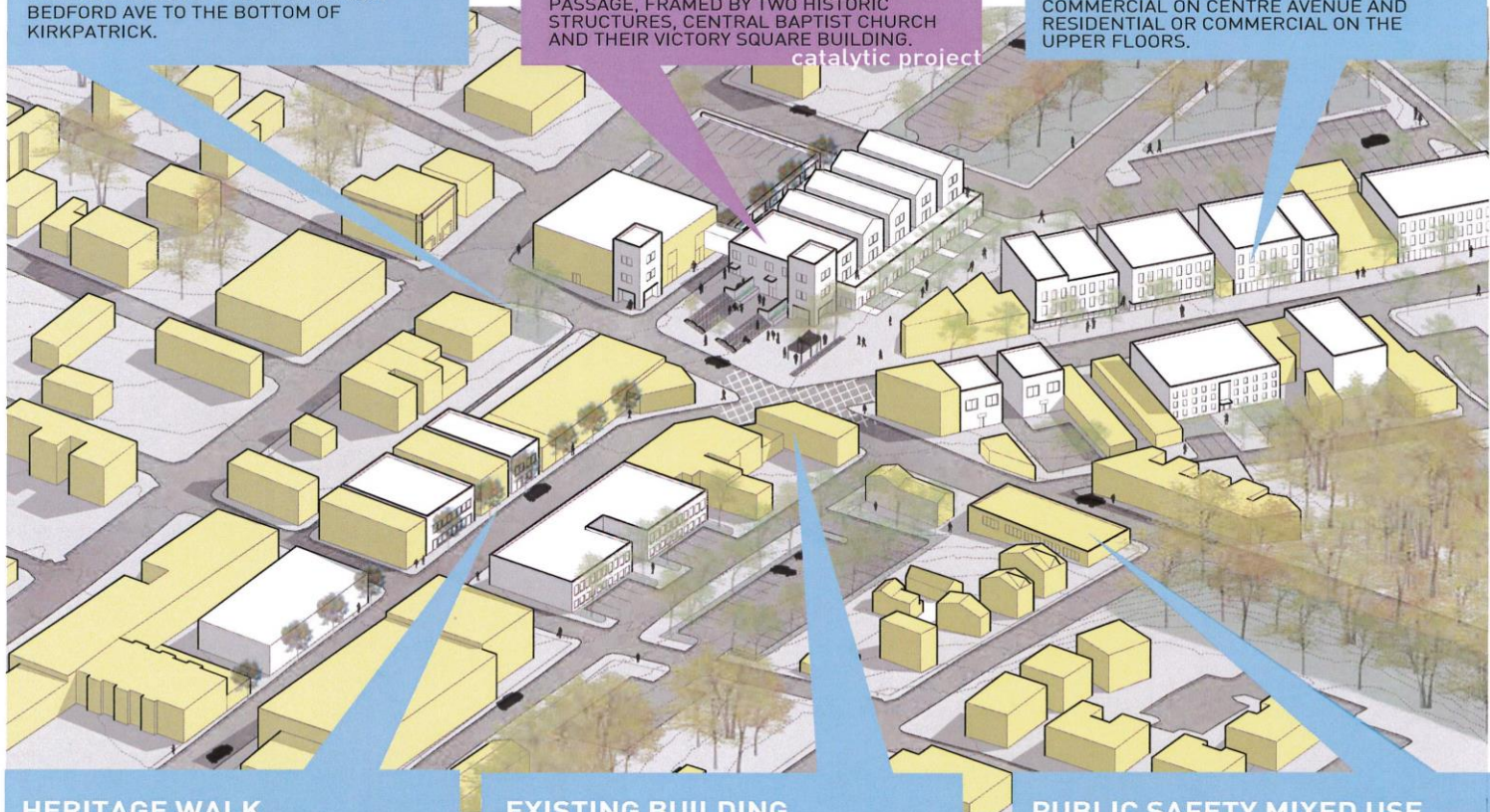
OPPORTUNITY SQUARE

A NEW PUBLIC SPACE, ACTIVATED BY A NEW MIXED USE BUILDING AND PEDESTRIAN PASSAGE, FRAMED BY TWO HISTORIC STRUCTURES, CENTRAL BAPTIST CHURCH AND THEIR VICTORY SQUARE BUILDING.

catalytic project

INFILL MULTI-USE BUILDINGS

TWO TO FOUR STORY BUILDINGS WITH COMMERCIAL ON CENTRE AVENUE AND RESIDENTIAL OR COMMERCIAL ON THE UPPER FLOORS.



HERITAGE WALK

THE HERITAGE WALK IS A SERIES OF SMALL OPEN SPACES AND HERITAGE SITES THAT CELEBRATE HILL DISTRICT HISTORY. EACH OPEN SPACE HAS COMMON SIGNAGE AND AMENITIES TO CREATE AN IDENTITY.

EXISTING BUILDING RENOVATION

RENOVATING HISTORIC STOREFRONTS AND EXISTING STRUCTURES CAN JUMP START ENTREPRENEURIAL INVESTMENT AND GIVE UNIQUE CHARACTER TO THE NEIGHBORHOOD.

PUBLIC SAFETY MIXED USE BUILDING

RELOCATING THE POLICE STATION COULD ENCOURAGE HEALTHIER COMMUNITY RELATIONS WITH THE POLICE. THE NEW LOCATION WOULD REQUIRE AMPLE REAR PARKING.

2144 Wylie Avenue











Specs

- 1,000 sqft dining room
- 58 seats total
 - 38 dining room
 - 20 patio
- 2,600 sqft total (1st Fl. & basement)
- 16 FTE workers (split in 2 shifts)
- 6 Days/week
- Chef's garden



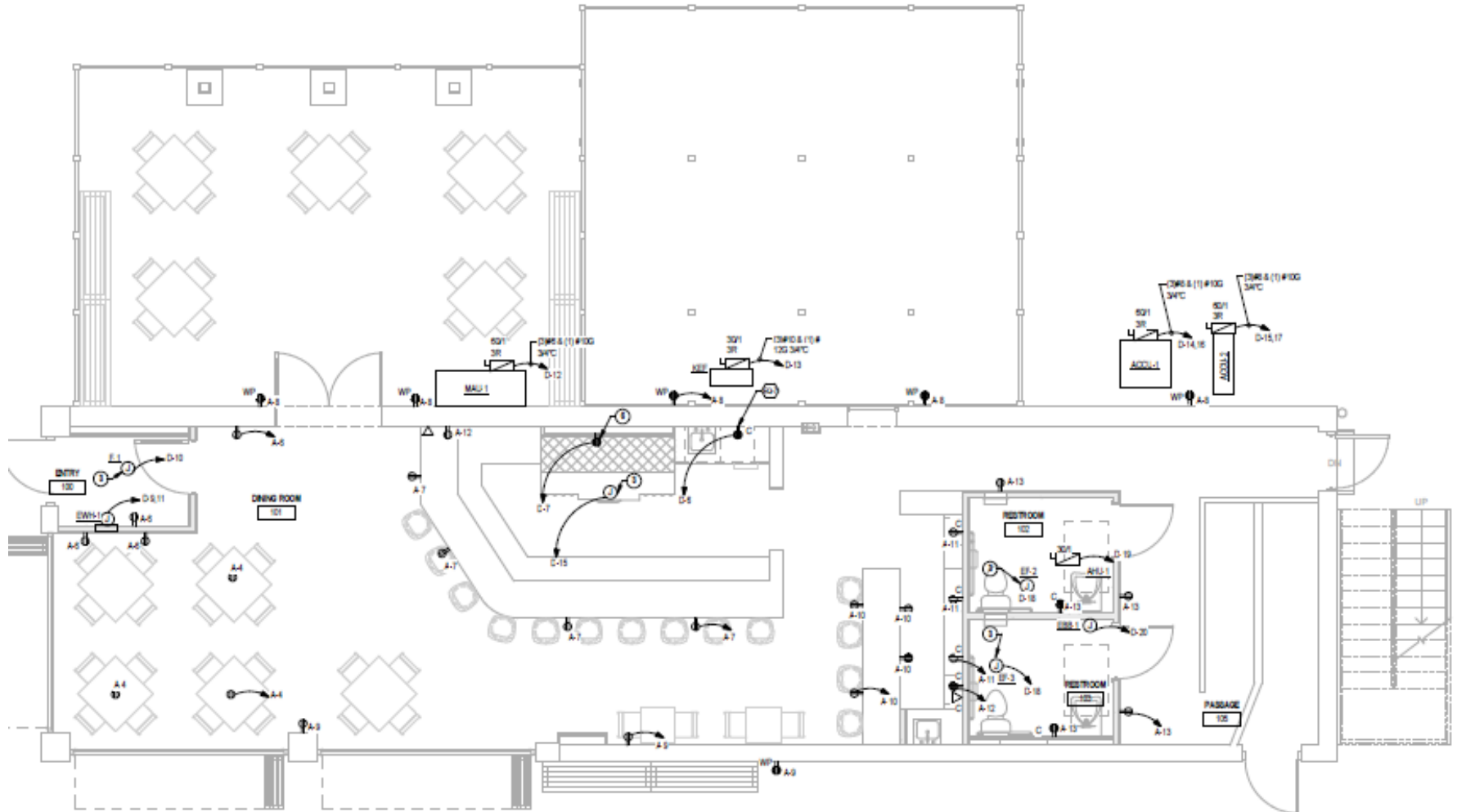
Chef Claudy Pierre

Eminent Hospitality Solutions Co.

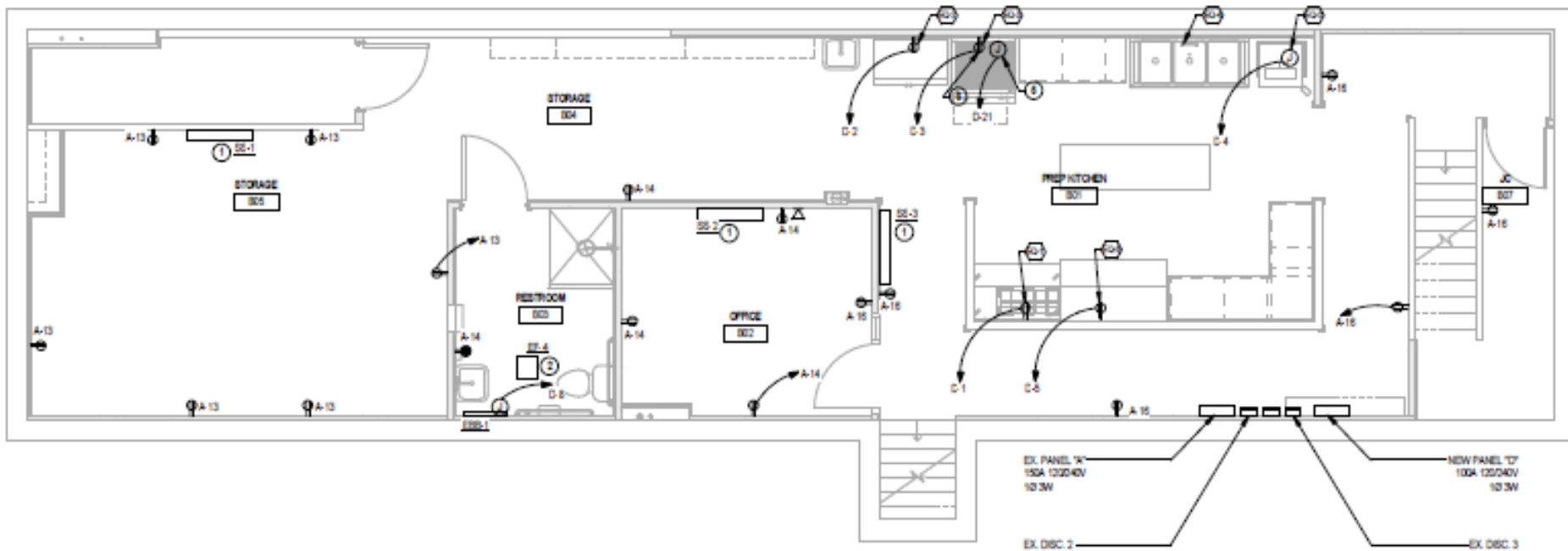


Chef Pierre is a Le Cordon Bleu Institute of Culinary Arts trained chef originally from Brooklyn, NY. Growing up in his mother & grandmother's kitchen, by the age of 10, Chef Pierre was cooking for his large Haitian-American family, including 8 siblings. Chef Pierre is passionate about food that is fresh and locally sustained. He is a firm believer that most of what ails the world can be cured by a good meal, one bite at a time. Food brings people together.

+ Floor Plan – 1st Floor



+ Floorplan – Basement



Questions & Answers