

RELOCATION OF PROJECT LOVE COALITION (PLC)

SITE INFORMATION

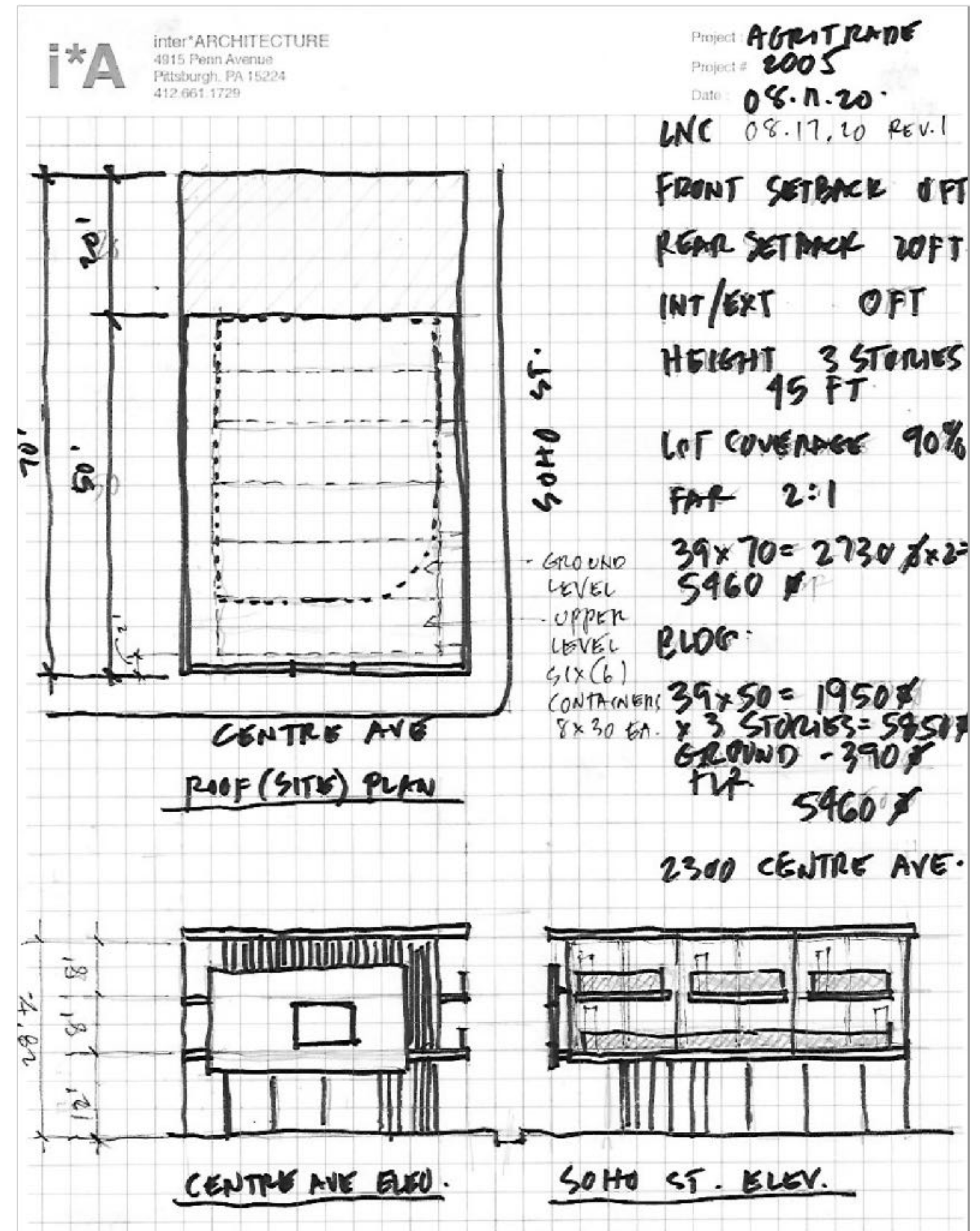
- PLC to move from Liberty Avenue to 2300 Centre Avenue in the Hill District
- 2,730 SF Gross Buildable Area
- Vacant parcel is owned by the City of Pittsburgh
- PLC currently manages the site under a 3 year lease; Removed blight and dead trees; built a new fence for green space and upcoming Veterans Farmers Market
- New proposed three story building with supportive services and administrative offices (LNC District / Mixed-use)
- 3 Affordable housing units
- 10 Off-street parking stalls on 2307 Laplace St.



AGRI TRADE DEVELOPMENT INSTITUTE MIXED-USE DEVELOPMENT PROJECT

BUILDING INFORMATION – PROPOSAL

- Project Love Coalition proposes a sustainable green development addressing the needs of human capital as well as housing and commercial renewal in its economic revitalization plans.
- The proposed owner occupied sustainable new mixed use project targeted as an eco-friendly community resource facility and veterans education/training site and first floor commercial retail incubation space.



AGRI TRADE DEVELOPMENT INSTITUTE MIXED-USE DEVELOPMENT PROJECT

SPACE / FLOOR INFORMATION

First Floor: 1,950 sf

- Retail Incubator Space / Mercantile
- Conference / Meeting Room
- Office Space
- Test Kitchen

Second Floor: 1,950 sf

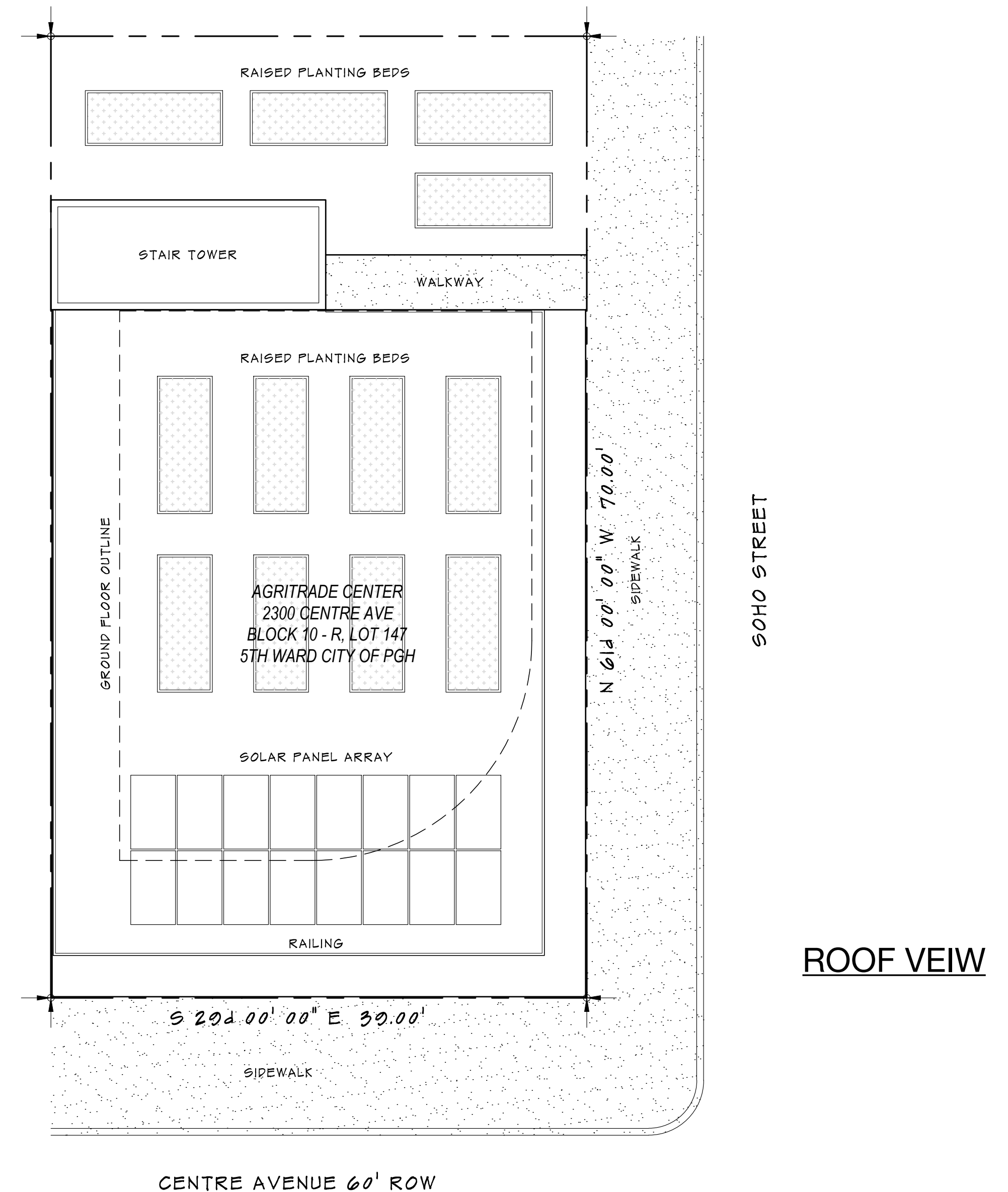
- Indoor Vertical Farm
- Class Room
- Admin Office Space

Third Floor: 1,950 sf

- Three 1 Bedroom Residential Suites

Roof:

- Solar Panel Array 400 sf
- Raised Garden Beds 700 sf



SITE PLAN

SCALE: 1" = 10'-0"



*A PROJ # 2005
08-10-20

© 2020 inter*ARCHITECTURE