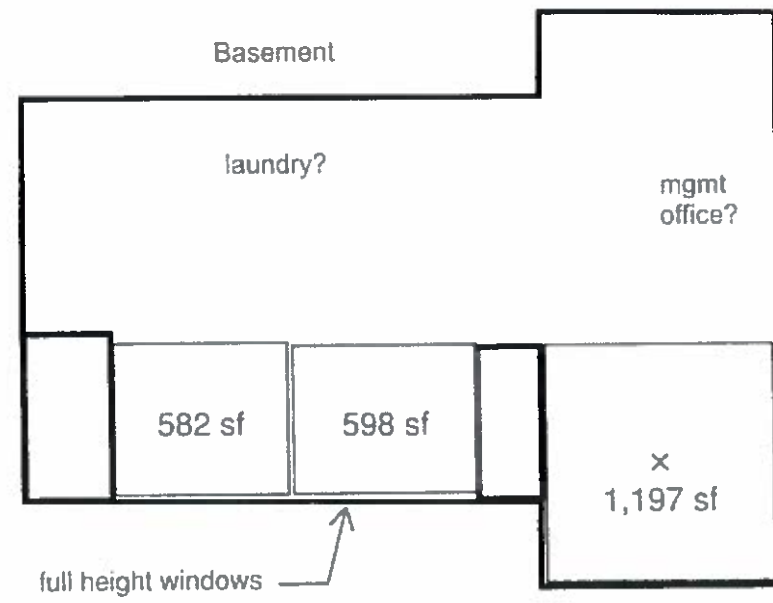


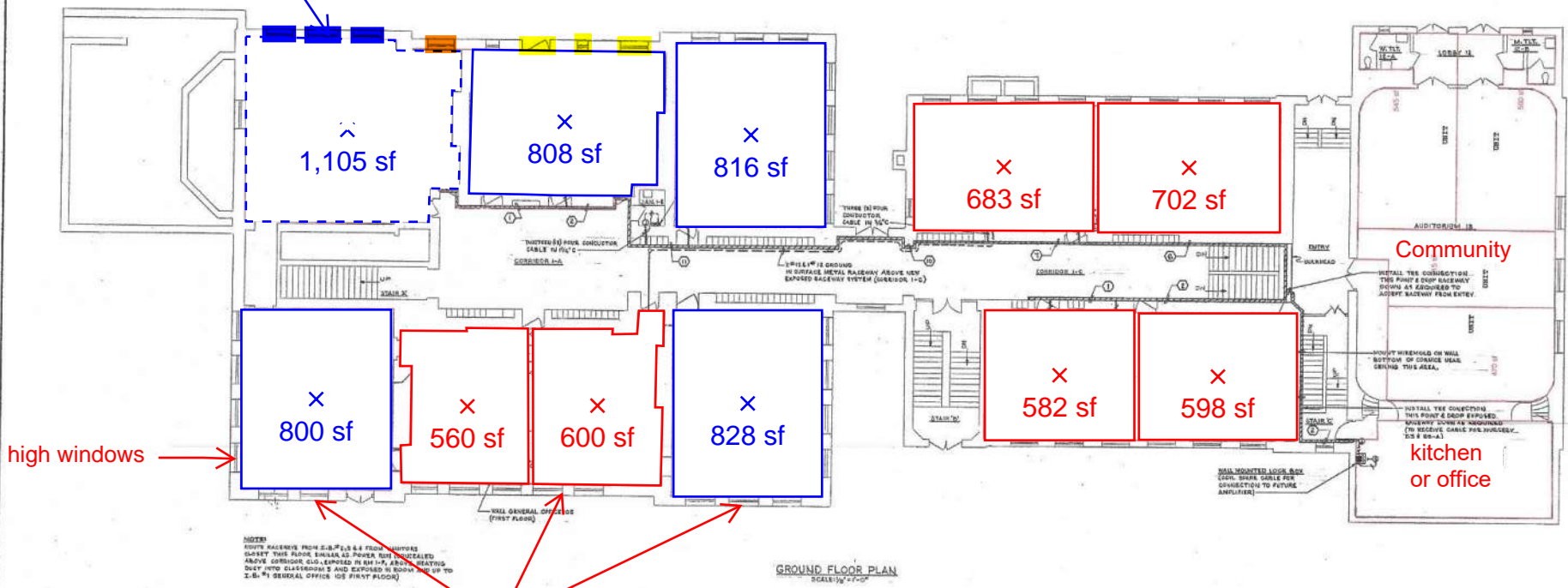
	<u>Flats</u>	<u>Multi-Floor Units</u>
SRO	90 to 200	
EFF	400 to 600	
1 BR	550 to 850	650 to 950
2 BR	700 to 1,100	850 to 1,300
3 BR	950 to 1,350	1,000 to 1,550
4 BR	1,100 to 1,550	1,200 to 1,750
5 BR	1,300 to 1,750	1,400 to 2,000



Basement  
 (2) 1 BR  
 (1) 3BR

	Flats	Multi-Floor Units
SRO	90 to 200	
EFF	400 to 600	
1 BR	550 to 850	650 to 950
2 BR	700 to 1,100	850 to 1,300
3 BR	950 to 1,350	1,000 to 1,550
4 BR	1,100 to 1,550	1,200 to 1,750
5 BR	1,300 to 1,750	1,400 to 2,000

old mechanical room.  
possible additional unit



Ground Floor

- (4) 2 BR
- (6) 1 BR
- (1) 3 BR
- (11) units

21

DATE	APPROVED

THE BOARD OF PUBLIC EDUCATION, PITTSBURGH, PA.  
OFFICE OF THE SECRETARY  
ADMINISTRATION BUILDING  
341 S. BELLEFIELD AVENUE

OFFICE OF THE DIRECTOR  
FACILITIES DIVISION  
128 N. CRAIG STREET



NEW CENTRALIZED SOUND SYSTEM  
GROUND FLOOR PLAN

LETSCHE EDUCATION CENTER  
1530 CLIFF STREET  
PITTSBURGH, PA.

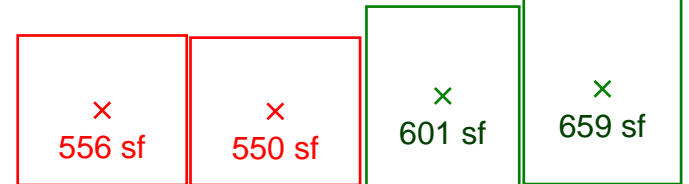
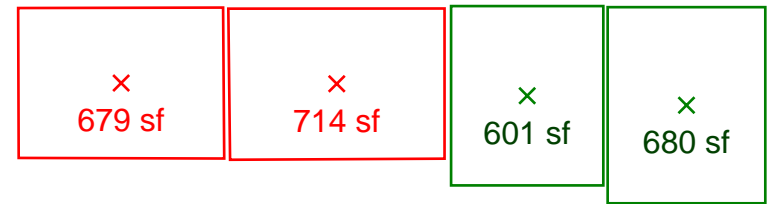
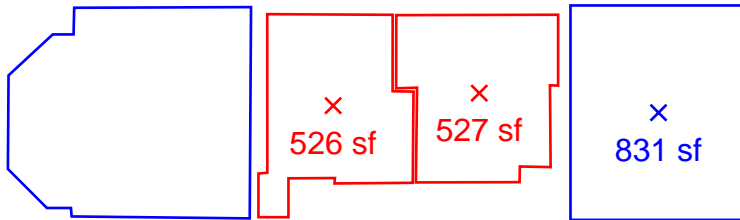
DRAWING NO.	DATE	BY	CHKD.	APP'D.
4				

PROJ. NO. EDP-148-34  
SHEET NO. E-2  
DRAWN BY V.C.B.

ALLOWED CONTRACTS  
MECHANICAL  
ELECTRICAL  
PLUMBING  
ELECTRICAL  
MECHANICAL  
PLUMBING

	<u>Flats</u>	<u>Multi-Floor Units</u>
SRO	90 to 200	
EFF	400 to 600	
1 BR	550 to 850	650 to 950
2 BR	700 to 1,100	850 to 1,300
3 BR	950 to 1,350	1,000 to 1,550
4 BR	1,100 to 1,550	1,200 to 1,750
5 BR	1,300 to 1,750	1,400 to 2,000

1,030 SF 3 BR



First Floor  
 (3) 2 BR  
 (4) 1 BR lofts  
 (8) 1 BR  
 (1) 3 BR  
 (16) units

	<u>Flats</u>	<u>Multi-Floor Units</u>
SRO	90 to 200	
EFF	400 to 600	
1 BR	550 to 850	650 to 950
2 BR	700 to 1,100	850 to 1,300
3 BR	950 to 1,350	1,000 to 1,550
4 BR	1,100 to 1,550	1,200 to 1,750
5 BR	1,300 to 1,750	1,400 to 2,000



SECOND FLOOR PLAN  
SCALE: 1/8" = 1'-0"

NOTE:  
WIRE SURFACE METAL RACEWAY NOTED PER  
WITH EXPOSED RACEWAY SYSTEM WITH UNEXPOSED RACEWAYS

**Second Floor**  
**(4) 2 BR**  
**(8) 1 BR**  
**(12) units**

44 Units

**Total**  
**(11) 2 BR**  
**(4) 1 BR lofts**  
**(24) 1 BR**  
**(3) 3 BR**  
**(42) units**

21

DATE	APPROVED
	APPROVED: <i>[Signature]</i> 5/13/13
	APPROVED: <i>[Signature]</i> 5/13/13

CONTRACTOR SHALL VERIFY ALL MEASUREMENTS AT BUILDING AND REPORT ANY DISCREPANCY TO THE OFFICE OF THE FACILITIES DIVISION.

THE BOARD OF PUBLIC EDUCATION, PITTSBURGH, PA.  
OFFICE OF THE SECRETARY  
ADMINISTRATION BUILDING  
341 S. BELLEFIELD AVENUE

OFFICE OF THE DIRECTOR  
FACILITIES DIVISION  
155 N. CRAIG STREET



NEW CENTRALIZED SOUND SYSTEM  
SECOND FLOOR PLAN  
LETSCHKE EDUCATION CENTER  
1330 CLIFF STREET  
PITTSBURGH, PA

DRAWING NO.	REV.	DATE	DESCRIPTION
4	E-1-E-4		INCL.

STANDARD DRAWINGS

FIG. NO. ES0-148-34  
SHEET NO. E-4  
DRAWN BY V.C.B.