

RELOCATION OF PROJECT LOVE COALITION

SITE INFORMATION

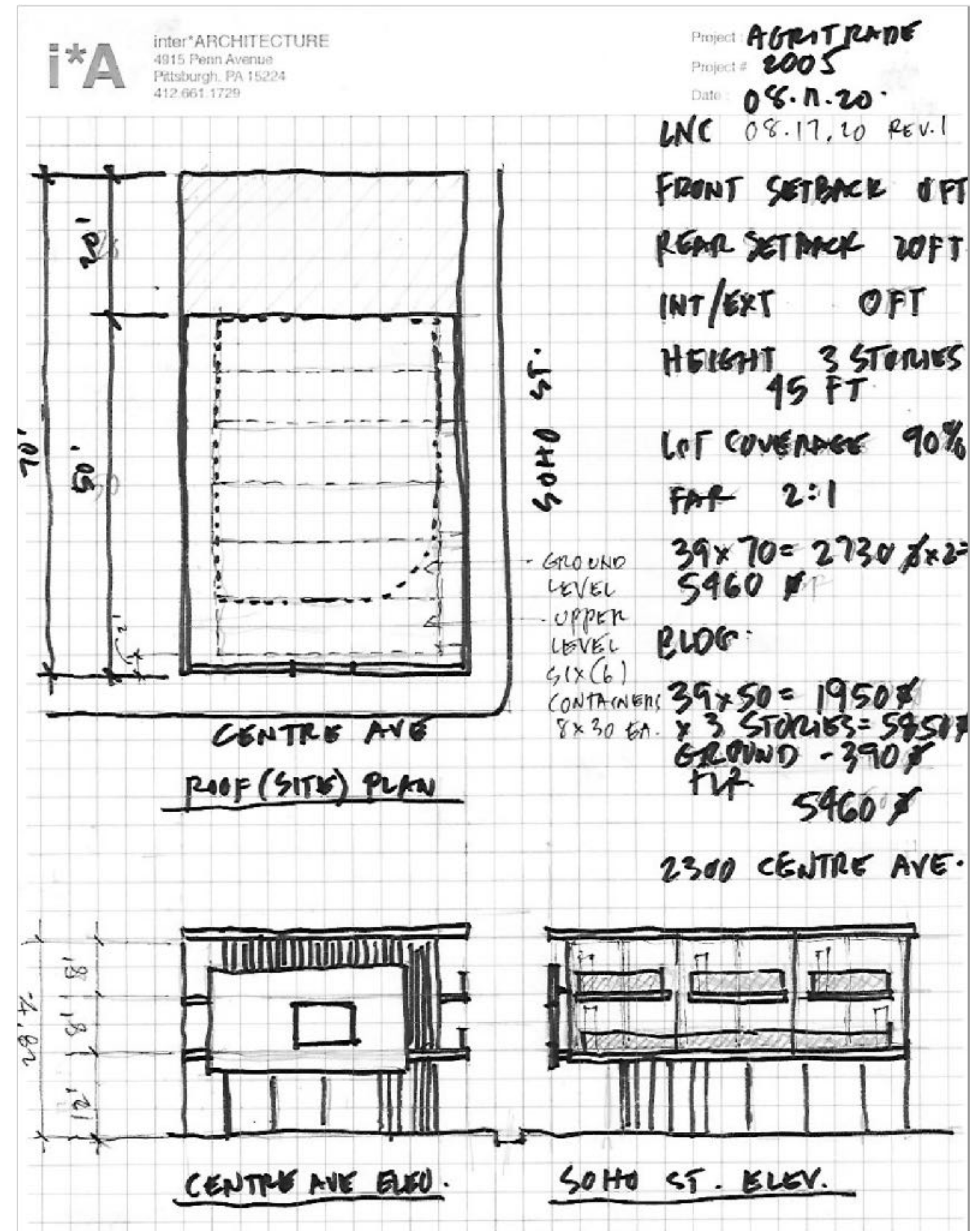
- PLC to move from Liberty Avenue to 2300 Centre Avenue in the Hill District.
- 2,730 SF Gross Buildable Area
- Parcel is owned by the City of Pittsburgh and leased by PLC
- 3 Affordable housing units
- 10 Off-street parking spaces on Laplace St.
- New proposed three story building with supportive services and administrative offices



AGRI TRADE CENTER MIXED-USE DEVELOPMENT PROJECT

BUILDING INFORMATION – PROPOSAL

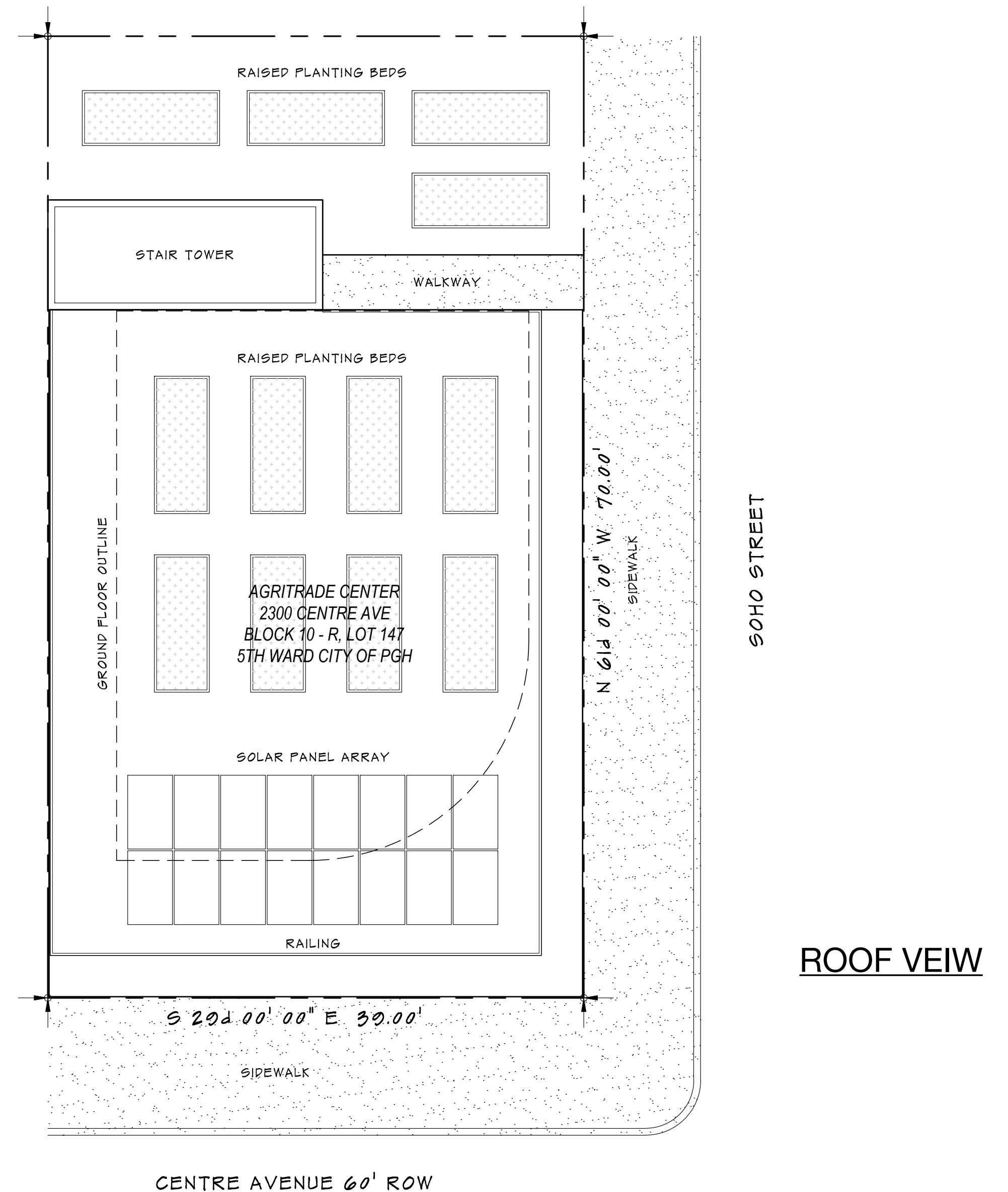
- Project Love Coalition proposes a sustainable green development addressing the needs of human capital as well as housing and commercial renewal in its economic revitalization plans.
- The proposed sustainable new mixed use project targeted as an eco-friendly resource center of workforce development and learning for veterans and first floor commercial retail space.



AGRI TRADE CENTER MIXED-USE DEVELOPMENT PROJECT

SPACE / FLOOR INFORMATION

First Floor: 1,950 sf
<ul style="list-style-type: none"> • Mercantile / Retail Space • Conference / Meeting Room • Office Space • Test Kitchen
Second Floor: 1,950 sf
<ul style="list-style-type: none"> • Indoor Vertical Farm • Class Room • Admin Office Space
Third Floor: 1,950 sf
<ul style="list-style-type: none"> • Three 1 Bedroom Residential Suites
Roof:
<ul style="list-style-type: none"> • Solar Panel Array 400 sf • Raised Garden Beds 700 sf



SITE PLAN

SCALE: 1" = 10'-0"



*A PROJ # 2005
08-10-20

© 2020 inter*ARCHITECTURE