



Cooperative Economics

To come together to build and maintain our own stores, shops and other businesses and to profit from them together.

A 27 member Hill District based non-profit

- Our MISSION is to create spaces, opportunities, networks, education and support for women of African descent to grow as entrepreneurs, artisans and servant leaders so that “we may lift as we climb.”

- Promote the economic well-being of low-income women of African descent, through the development and support of entrepreneurial activities
- Promote economic development and entrepreneurial activity through cooperative means in Pittsburgh's Hill District, thereby combating community deterioration
- Promote agricultural activity, nutritional education and healthy eating habits in communities of African descent, particularly the Hill District
- Educate the public about economic conditions faced by artisans and manufacturers in Africa and promote fair trade practices in the United States
- Establish standards of quality and promote the cultural awareness and connectivity of craftswomen of African descent



COMPONENTS OF THE COLLECTIVE

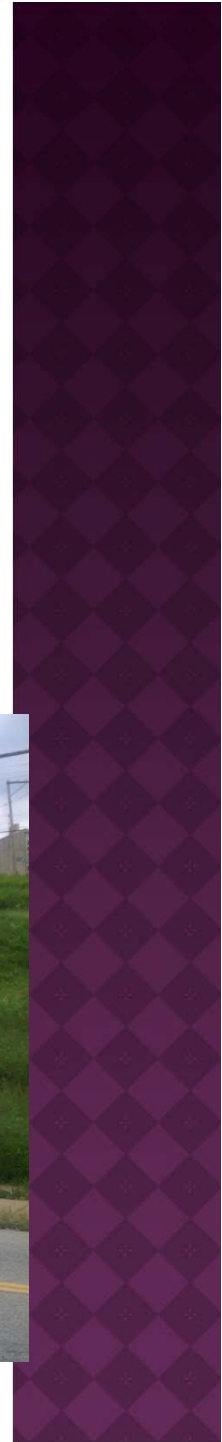
- ◉ Boutique
- ◉ Entrepreneurship Preparation Program (EPP)
- ◉ Urban Agriculture
- ◉ Investment Education- Financing & Work Sharing
- ◉ Cooperative(s)
- ◉ Open Air Marketplace



REHABILITATION OF 2239 CENTRE AVE AND 2 ADJOINING PARCELS



Centre Avenue at Soho Street, across from Weil Elementary School

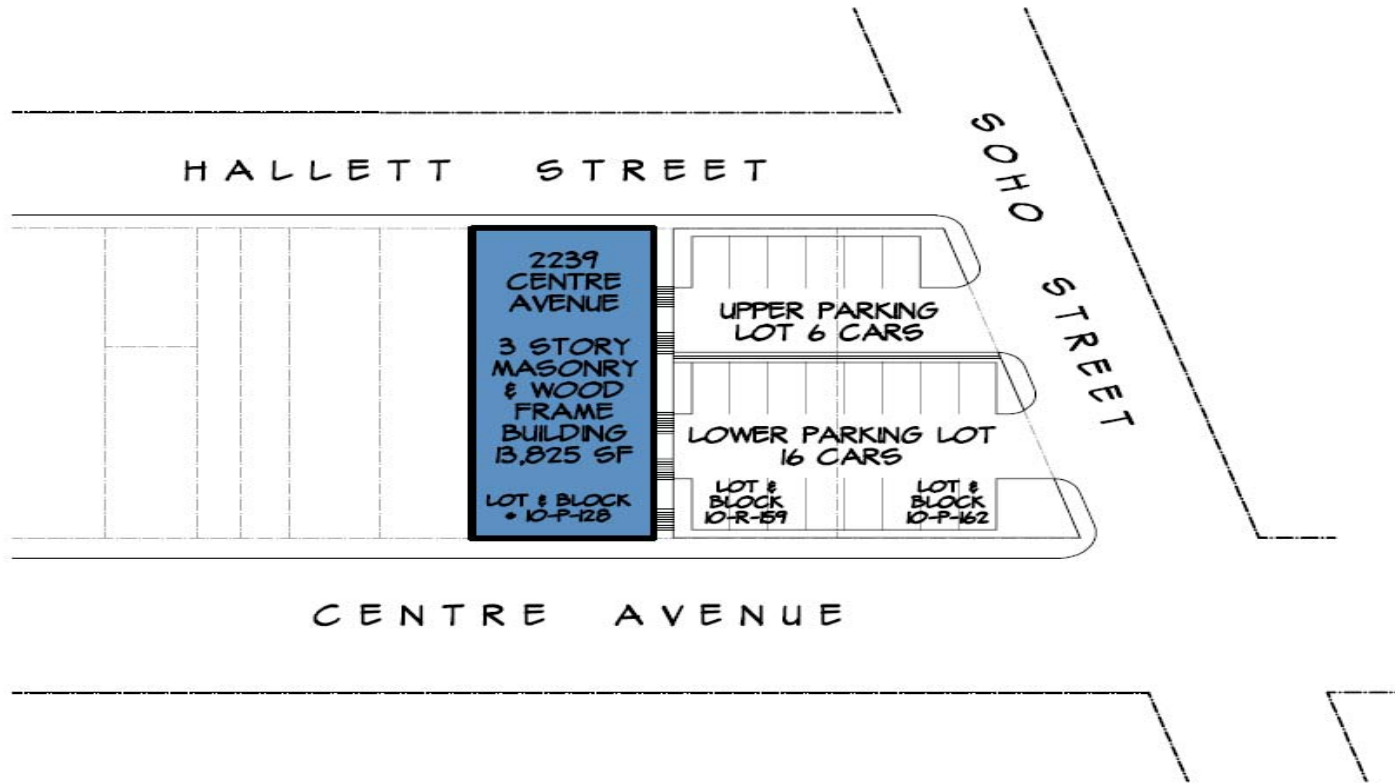


HILL DISTRICT MASTER PLAN - BUSINESS INCUBATOR

- ◉ Purpose: Encourage and support local businesses with the goal of establishing a sustainable, lively economy in the Hill
- ◉ Recommended Programs:
 - Non-Profit Incubator Space
 - Arts Incubator Space
 - Small Business Incubator Space
 - Cooperative Marketplace
 - Small Business Support
 - Innovation Competition



UJAMAA SITE PLAN



1 SITE PLAN
SP-2 SCALE: 1/64" = 1'-0"



Expanded Boutique & Offices



1st FLOOR PLAN
 A-1 SCALE 1/8" = 1'-0"
 8/20/07



LETAMAA BOUTIQUE AND MARKETPLACE
 2237 CENTRE AVENUE PITTSBURGH, PA 15201

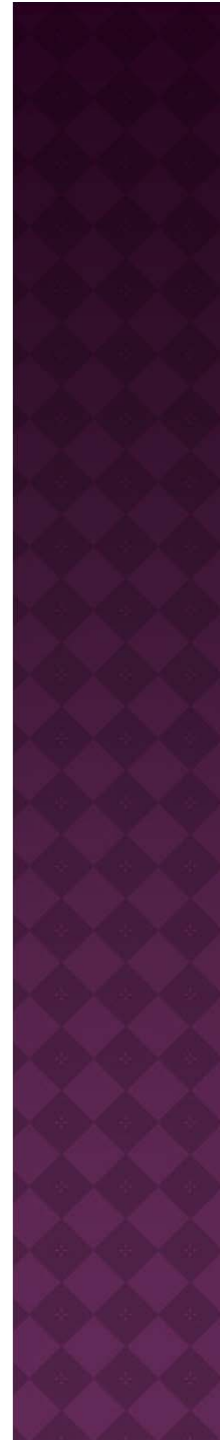
FIRST FLOOR PLAN

Milton Ogot
 ARCHITECT

100 ANTHONY DRIVE, PITTSBURGH, PA 15201
 TEL: (412) 261-1001 FAX: (412) 261-1002

LETAMAA
 COLLECTIVE

200 1/2 CENTRE AVE
 PITTSBURGH, PA 15201



- Showcases the work of Africana women artists of Ujamaa, and other Africana non-members (men and youth as well!)
- Boutique Highlights
 - Tripled income in the first year
 - Has provided increase in marketing and sales to more than 40 local and regional artists
 - Hosted receptions for major tours, conferences and book signings for regional/national authors

Ujamaa Boutique

1901 Centre Avenue

Suite 100

Hill District

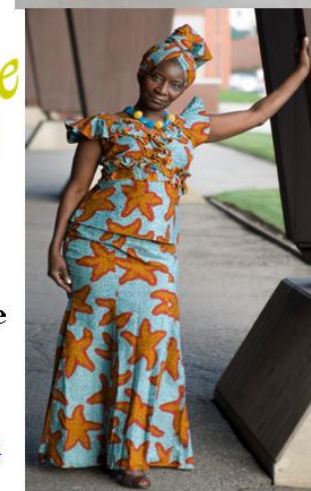
Pittsburgh

15219

M-F 10-6 pm

Sat 10-3 pm

412•228•5160




Ujamaa Collective
 Creating a New Standard

A non-profit enterprise that
 supports the creative
 cooperative entrepreneurship
 of women of African descent in the
 Historic Hill District

LEARN MORE AT

WWW.UJAMAACOLLECTIVE.ORG

UJAMAA'S BUSINESS INCUBATOR

WILL ADDRESS 4 OF THE PROGRAMS
CALLED FOR IN THE MASTER PLAN

Small Business Incubator

- ◉ Up to 35 workspaces
- ◉ Commercial kitchen/
light manufacturing
- ◉ Office space

Cooperative Marketplace

- ◉ Indoor/outdoor space
for vendors to sell
arts, crafts, jewelry,
food and other
products

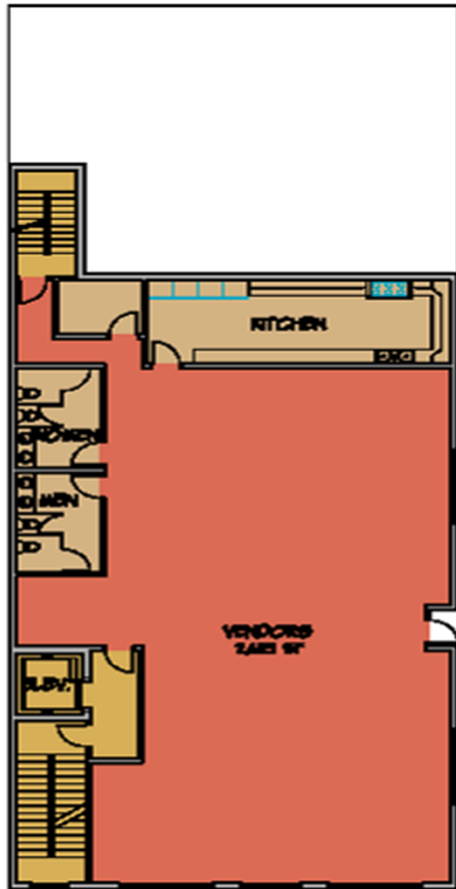
Arts Incubator Space

- ◉ Multi-use studio &
production space

Small Business Support

- ◉ Entrepreneurship
classes
- ◉ Financial/other
support (Isusu and
Esusu)
- ◉ Cooperative purchasing
- ◉ Cooperative marketing





1 2nd FLOOR PLAN
AS SCALE 1/8" = 1'-0"
4,200 SF

UTAMAA BOUTIQUE AND MARKETPLACE
2239 CENTRE AVENUE PITTSBURGH, PA 15207

SECOND FLOOR PLAN

Milton Ogot
ARCHITECT

330 ANTRON DRIVE, PITTSBURGH PA 15206
TEL.: (412) 519-2897 FAX.: (412) 786-4638

UTAMAA
COLLECTIVE

110-1105 CENTRE AVE.
PITTSBURGH, PA 15207



Indoor/Outdoor Marketplace

OPEN AIR MARKETPLACE

- ◉ Successfully piloted in July 2009 and operated from 2010-present season.
- ◉ Offers a range of quality goods including
 - distinctive arts and crafts,
 - cultural items,
 - natural body care products,
 - handmade jewelry,
 - custom clothing,
 - glass works,
 - and food.

Fosters innovation and a new model for a public market that is contributing to the creation of the public places that attract a broad diversity of people.



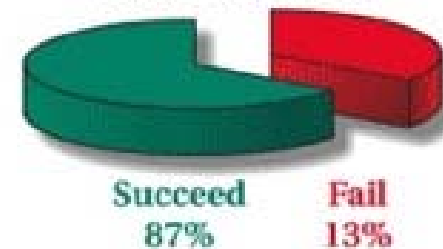
COMMUNITY MARKETPLACE & INCUBATOR

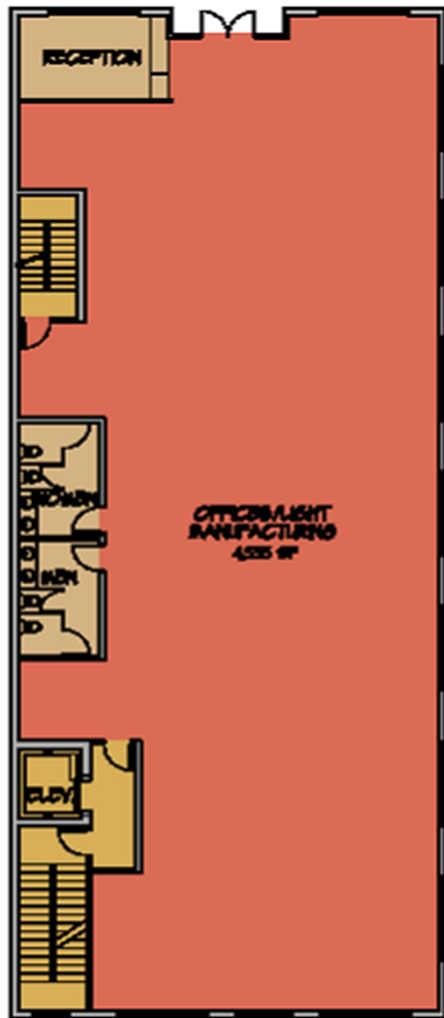
- Provides fair and consistent market for vendors to reach customers and clients within the Historic Hill District, with product guidelines for safety and health



- Envisioned as a unique regional destination for locals and visitors, providing a vibrant indoor & outdoor shopping experience

Incubator Business Successes





1 3rd FLOOR PLAN
A-B
SCALE 1/8" = 1'-0"
5,360 SF

- Expansion of 3rd FI from +/- 1200 sq ft to 4,555 sq ft business incubator
- Available for short and long term rental for service professionals and artists of various mediums

LITANIAA BOUTIQUE AND MARKETPLACE 2254 CENTRE AVENUE PITTSBURGH, PA 15211	Milton Ogot ARCHITECT <small>220 ANTHON DRIVE, PITTSBURGH PA 15215 TEL: (412) 519-2897 FAX: (412) 796-9428</small>	LITANIAA COLLECTIVE <small>PO BOX 6070 CENTRE AVE PITTSBURGH, PA 15207</small>
THIRD FLOOR PLAN		