

Proposal For Centre Avenue Property

*by FOCUS Pittsburgh
to Pittsburgh URA and Hill District CDC*

September 5, 2012

Agenda

- Introduction to FOCUS Pittsburgh
 - Background
 - Current & Future Programs
 - The Need to Expand
- FOCUS Pittsburgh Proposal to URA
 - Area of Interest
 - Renovation Plans
 - Budget
- Scoring our proposal

Introducing Pittsburgh's FOCUS Center

- **HOW DID WE START?** Theodora Polamalu, a **FOCUS North America (NA)** Advisory Board Member, was instrumental in bringing FOCUS NA to Pittsburgh to establish a center here.
- **What is FOCUS NA?** It was founded in 2009 in Kansas City, MO and has established a variety of centers in the US, including:
 - Appalachia
 - Indianapolis
 - Minnesota
 - Orange County
 - **Pittsburgh**
 - San Diego
 - St. Louis

Our Mission, Vision and Values

FOCUS: Our name stands for two things, our mission:

Mission: As an expression of Christ's love, FOCUS NA serves the hungry, thirsty, stranger, naked, sick and imprisoned by providing

Food, **O**ccupation, **C**lothing, **U**nderstanding, and **S**helter.

and how we do it:

Fellowship of Orthodox Christians United to Serve

Vision: Experiencing and revealing the Kingdom of God in North America "on earth as in heaven."

Values:

1.Christ Centered	3.Humility
2.Mercy	4.Financial Stewardship

FOCUS Pittsburgh Strategy

A “Local” Strategy:

- Focusing the local Orthodox community’s good will to make a difference in local lives
- Targeting the **working poor and those experiencing homelessness** in the Hill District (and other local Pittsburgh areas)
- Identifying **critical and underserved needs** to build upon existing efforts in the community without duplication
- Be part of the community to serve the community
- Collaborate with successful partners for faster impact - not reinventing the wheel
- Leverage the FOCUS North America’s proven programs and back office support; collaborate with other centers to share our programs, ideas and learnings

FOCUS Pittsburgh Current Programs

Living Assistance Programs:

- Document Recovery
- Employment Assistance, including bus passes
- Housing Locator Assistance
- PA State Parole Community Service
- Benefit Enrollment

Basic Programs:

- Furniture for New Beginning
- Backpack Feeding Program at A. Leo Weil Elementary School
- Emergency food pantry
- Clothing pantry

Community Programs:

- Weekly Community Meals and Monthly Picnics
- Movie night for youth
- FOCUS Pittsburgh Christmas Program

Mental Health Services Programs:

- NA/AA Meetings
- Cognitive Behavior/Violence Prevention Classes
- Psycho-social Assessments/Case Management

FOCUS Pittsburgh Impact

From our modest, ~2,500 sq ft footprint on 2228 Centre Avenue:

- \$85,000 of goods distributed for free in the first six months of 2012 (e.g., food, clothing, and furniture)
- 2057 Hot Meals have been served
- 107 participants received Transportation Assistance
- 75 participants received Document Recovery Assistance
- 60 Children participated in the Back Pack Feeding Program at A. Leo Weil Elementary School
- 15 Participants obtained employment and 1 started a new business

Plus, there is a special sense of community at the center where local residents volunteer and help each other

Future Plans

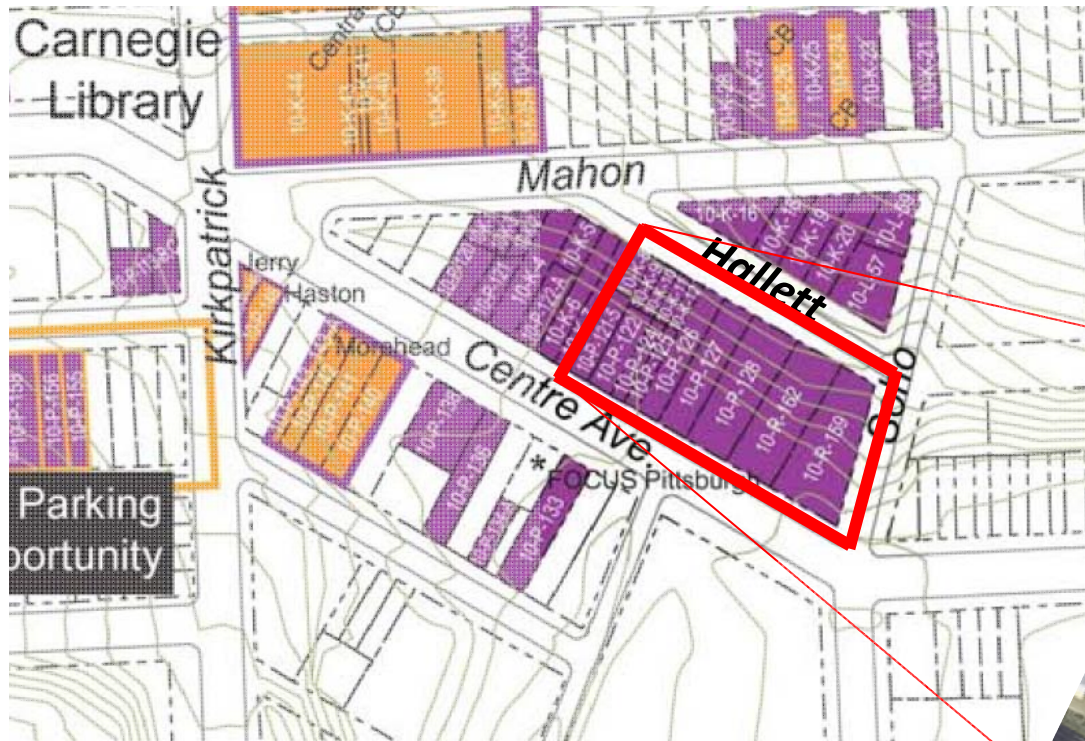
With more space, FOCUS Pittsburgh plans to:

- **Expand** existing programs for more impact
- **Create** a *Volunteer-in-medicine (VIM)* Free Health Center for the uninsured
 - Over 70,000 are uninsured in Allegheny County
 - Existing free clinics are oversubscribed
 - Over last 9 months, +400 hours of professional effort toward planning
 - Medical equipment donations already in hand
 - Other centers operating 5 days a week deliver \$2 million annually in value

Agenda

- Introduction to FOCUS Pittsburgh
 - Background
 - Current & Future Programs
 - The Need to Expand
- ➔ • FOCUS Pittsburgh Proposal to URA
 - Area of Interest
 - Renovation Plans
 - Budget
- Scoring our proposal

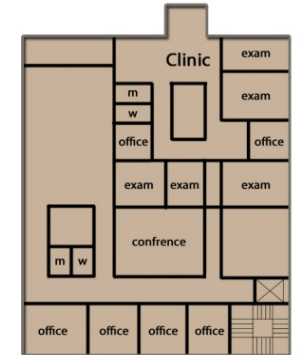
FOCUS Pittsburgh Proposal: Area of Interest



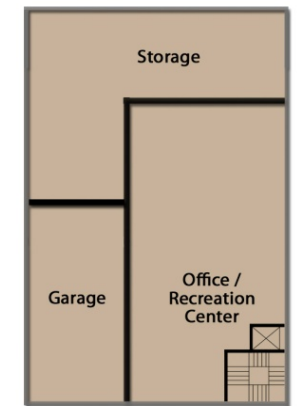
Two buildings and nearby parcels on the 2200 block of Centre Avenue



FOCUS Pittsburgh Proposal: Renovation site plan for buildings and area



2nd Floor



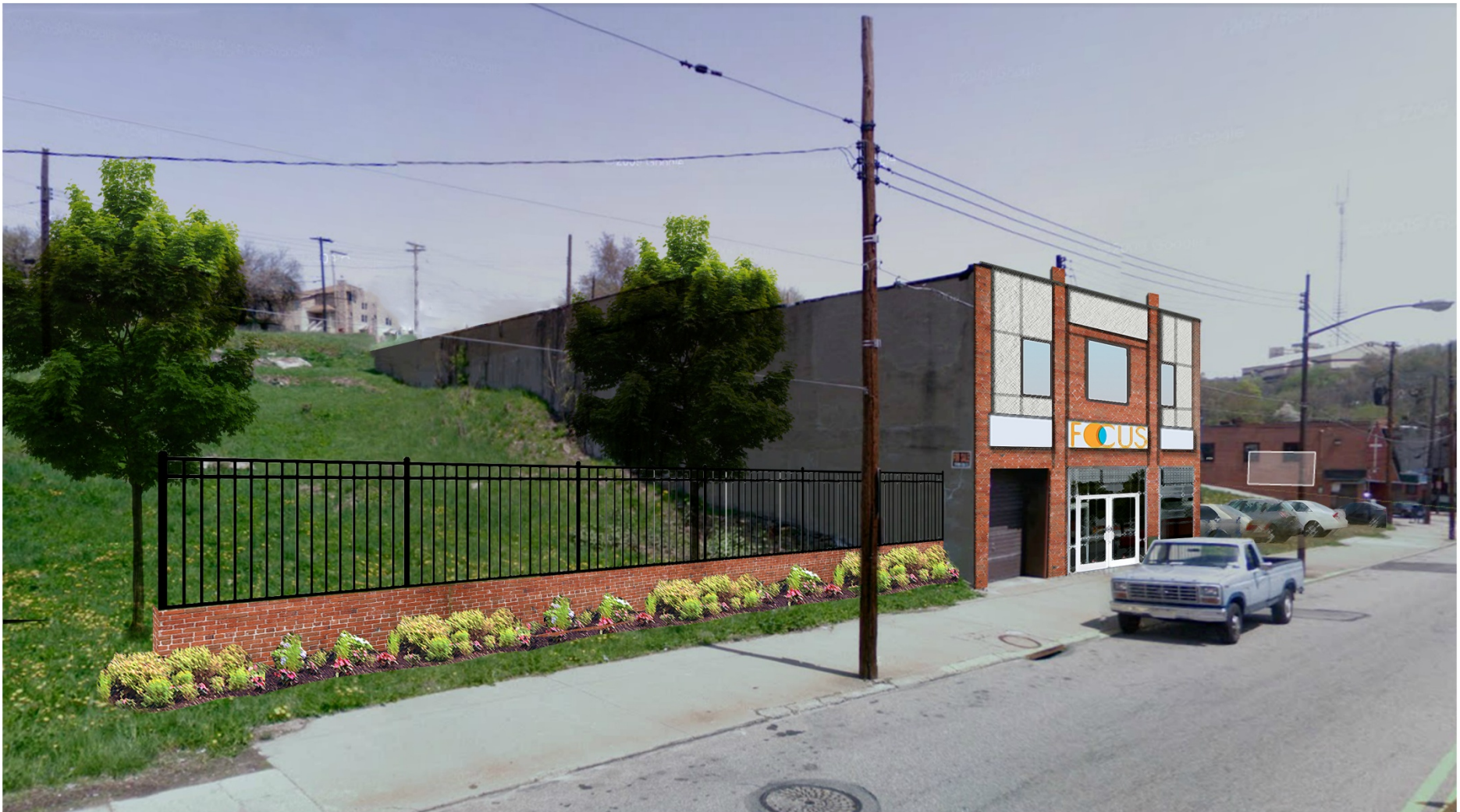
1st Floor

Schematic Site Plan

Center Avenue, Pittsburgh
8.21.2012

Street Level Perspective:

Larger structure Looking down Centre toward Soho



Perspective

Center Avenue, Pittsburgh
8.21.2012

FOCUS
+
PITTSBURGH



Multiphase, Multiyear Plan

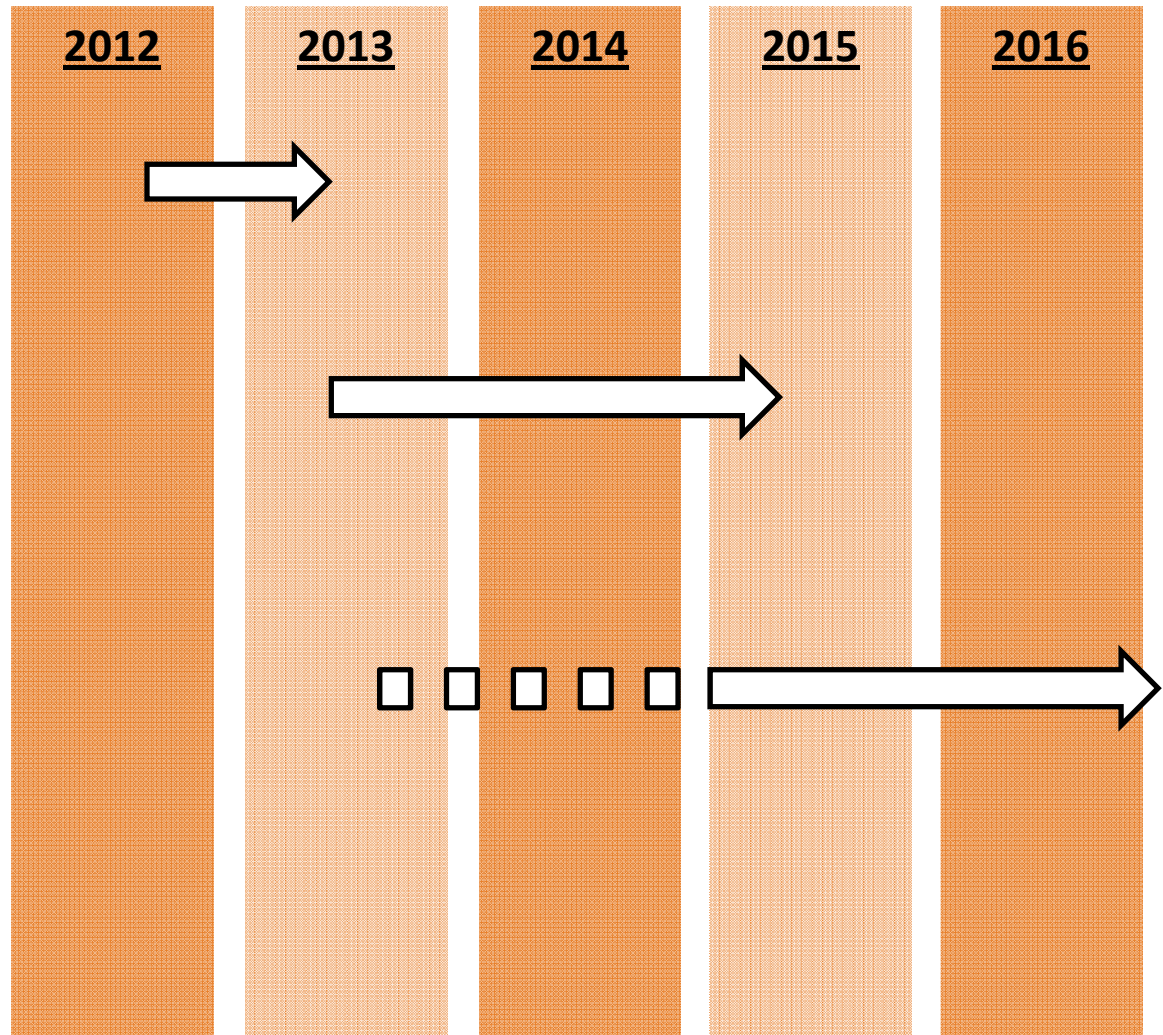
Acquisition

Phase 1:

Larger structure renovation

Phase 2:

Smaller Structure and grounds renovation



Agenda

- Introduction to FOCUS Pittsburgh
 - Background
 - Current & Future Programs
 - The Need to Expand
- FOCUS Pittsburgh Proposal to URA
 - Area of Interest
 - Renovation Plans
 - Budget



- Scoring our proposal

Scoring the FOCUS Pittsburgh Proposal

Key Dimension	Our Approach
Builds Upon African American Cultural Legacy <ul style="list-style-type: none">• Honors the historic and cultural legacy• Advances existing and creates new relationships• Ensures that Hill District residents are empowered and informed	By addressing the needs of the community and actively involving the local residents, we seek to build on the cultural legacy of the Hill District
Housing Development Without Displacement <ul style="list-style-type: none">• Includes an appropriate level of housing• Establishes a target housing mix• Provides quality rental and ownership housing opportunities• Uses housing development to spur economic and community development• Allows existing residents and business to stay	Our proposal does spur the economic and community development through our programs at the person by person level, and will help participants consider staying and building a better community.

Scoring the FOCUS Pittsburgh Proposal (Cont.)

Key Dimension	Our Approach
<p>Economic Empowerment and Commercial Development</p> <ul style="list-style-type: none">• Contains retail and commercial use on the first floor; promotes ground level activity• Uses existing neighborhood resources first• Supports economic activities that directly benefit Hill District residents• Demonstrates a commitment to retain and provide expanded businesses opportunities• Demonstrates partnership with Hill District organizations• Restores commercial vibrancy and strength by concentrating market demand• Demonstrates an effective plan to hire Hill District residents	<ul style="list-style-type: none">• Our “Open Door” center will be on the first floor by design to welcome all• Many of our programs aim to improve participants’ economic opportunities• FOCUS Pittsburgh has many local relationships, such as the Hill District Education Counsel• Our plans for a VIM Health Clinic onsite will relieve the transportation burden of patients• Health Center will encourage the local youth to consider healthcare careers• Already hired one resident and interested in creating future opportunities for more

Scoring the FOCUS Pittsburgh Proposal (Cont.)

Key Dimension	Our Approach
<p>Make the Hill District a Green and Well-Designed Community</p> <ul style="list-style-type: none"> • Promotes the Hill District’s natural land features • Improves Hill District land and streetscaping • Keeps or creates important walkways • Preserves existing structures and history • Promotes usage of high quality entertainment and open spaces 	<p>See our site plans for our designs for intended use of buildings and open space</p>
<p>Mobility, Transportation and Parking</p> <ul style="list-style-type: none"> • Improves transportation networks and services • Promotes walkability, street accessibility for the disabled, etc. • Supports Hill District community in improving public transportation • Creates a well-planned strategy that supports new development while minimizing negative impacts on residents 	<p>Our plans are designed for ease of access, including the clinic parking and access from Hallett and Centre Avenue parking for the first floor of the center.</p> <p>FOCUS Pittsburgh has programs to assist participants for transportation associated with job training and new employment</p>

THANK YOU
for your TIME
and INTEREST

Any Questions?
Feedback?
Support?

Paul Abernathy
412-261-1234
paul@focusna.org